

MT3: stepper motor control cards

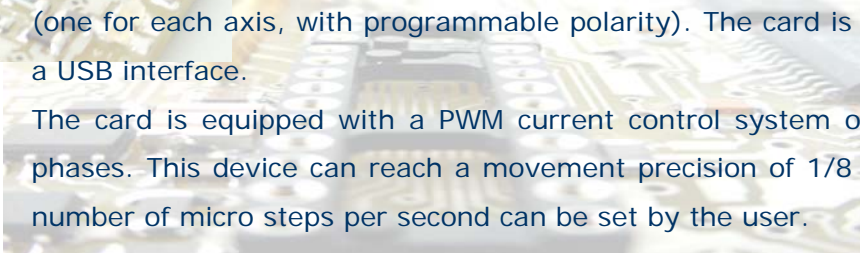
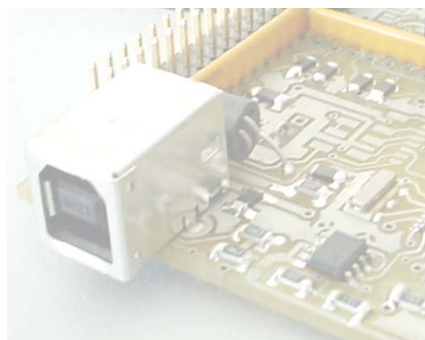
The most complete range of cards for the intelligent control of stepper motors

MT3 motion cards are the perfect solution to manage stepper motors with nominal current up to 0.75A

MT3 is a small size (60 x 90 x 15 mm - 2,36 x 3,92 x 0,59 inches) low power stand-alone control device which can control both three bipolar and three unipolar stepper motors (i.e. 8 and 4 lead motors, and 6 lead center tapped motors) and their respective limit/home detection sensors (one for each axis, with programmable polarity). The card is managed by a USB interface.

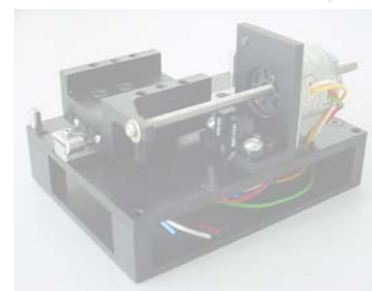
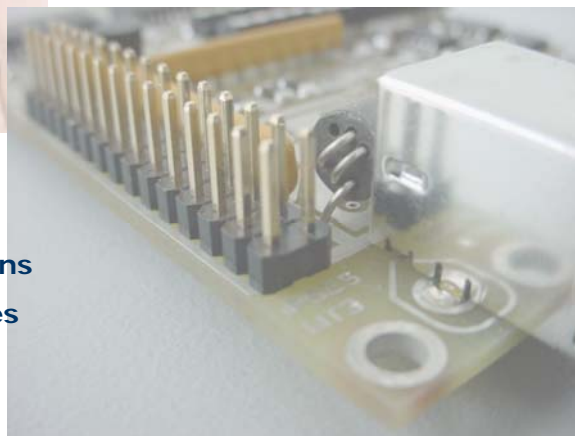
The card is equipped with a PWM current control system on the motor phases. This device can reach a movement precision of 1/8 of step. The number of micro steps per second can be set by the user.

MT3 is available also as **Box model** in which the card with power supply is integrated in a case.



High precision and control of the movement: from the whole step until 1/8 of step

Flexibility and customizing: solutions without compromises



On request **IPSES** makes customized versions of its stepper motor control cards, to answer its clients' needs. Especially it is possible to have the cards in different size (so to make easy the integration in a mechanical system) and with embedded communication protocol.

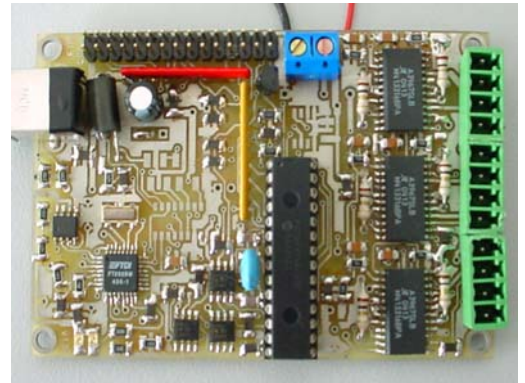
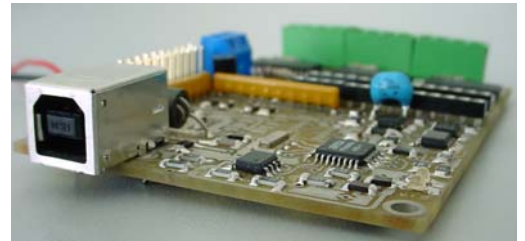
Besides, IPSES gives you all the necessary technical advice and assistance, from the wiring of the card since the programming of customized managing software.

High qualitative level at a competitive cost

1

Technical features

- **Power supply:** The logic is self-supplied directly from the USB. Motor power supply: from 4,5 up to 30 Vdc.
- **Output current:** max 0,75A/phase (0,85A of peak).
- **Control:** microstepper (up to 1/8 of step).
- **Programmable speed** from 38 microstepper/s up to 2.380 microstepper/s
 - Braking action activable when the motor is not running
- **Interface:** USB 2.0 (B connector type)
 - Limit/home detectors (one for each axis) with adjustable polarity
 - Use of optical sensors or mechanical switches by choice.
- **Position** form -999.999 microsteppers up to + 999.999 di microsteppers
 - Possibility to activate the home position research at the power up (position on «limit detection»)
 - Further limit-home detection movements (negative run) lockable
- Demo software and user manual included.
- Equipped with driver for 98/2000/XP Windows
- **Dimensions:** 60 x 90 x 15 mm (2,36 x 3,92 x 0,59 inches)



Contacts

IPSES s. r. l.

Research and development office:

via Trieste, 48
20020 Cesate (MI)
Italy

tel. +39 02 99068453
fax +39 02 700403170
http://www.ipses.com

e-mail: info@ipses.com

Sales office: sales@ipses.com

Technical support: support@ipses.com

