

**IPSES s.r.l.** conceives, projects and markets electronic and scientific instruments. The customized planning of our devices allows us to answer specific necessities for customers needing embedded systems. **IPSES** clients enjoy access to a dedicated project engineering team, available as needed.

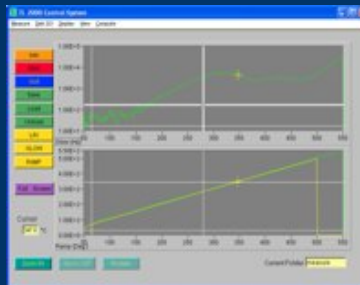
Our pool consists of highly competent professionals whose experience in this field is extremely strong. Thanks to constant updating and technical development, **IPSES** is a leading company, combining the dynamism of a young group into the competence and reliability of a qualified staff.

### **IPSES s.r.l.**

Registered Office: Via Quadronno, 24 - 20122 Milano - Italy  
 Operations Office: Via Trieste, 20/5 - 20020 Cesate (MI)  
 C.F. e Partita IVA: 03999740966 - N.R.E.A. 1718854  
 Tel. (+39) 02/99068453 - Fax (+39) 02/700403170  
 e-mail: info@ipses.com - http://www.ipses.com

### Some of our products:

**HiVo**  
 Adjustable high voltage power supply: output voltage range: 240V – 1.500V, polarity available as needed. Maximum current 1mA.



**TL2000**  
 Integrated unit for thermoluminescence measures. **IPSES** manufactures and provides all the instruments to realize a thermoluminescence analysis laboratory.

**MT2, MT2USB e TMCB**  
 Multiaxes motion control cards for stepper motors. Serial, USB or ethernet interface. Power output up to 0,6 A./Ph for bipolar biphased motors. These devices are conceived to manage high precision coordinate position systems (x, y) through a dedicated protocol.



**PromPro**  
**EEPROM** Programmer. Propriety software for data storage inside microwire protocol memories. Easy to use. File input format custom specified.

We can also provide the expertise to execute or to give scientific advice about physical and chemical analyses on works of art (XRD, EDS-SEM, FTIR, HPLC, Microspettrofluorimetry UV, microchemical tests).

**Many research centres in Italy and abroad already use our instruments.**



### Sale Office

**IPSES** offers its products and services to worldwide customers from its Italian sale offices. **IPSES** ships to all countries by **DHL** or, on request, by any other international express carrier.

For information contact our sale office at:  
**IPSES S.r.l.** - Via Trieste, 20/5  
 20020 Cesate (MI) - Italy  
 Phone (+39) 02 99068453  
 Fax (+39) 02 700403170  
 e-mail: info@ipses.com.

U.S. customers can also purchase our products directly from **Graftek Imaging Inc.**, our US authorized retailer. For information contact:

**Pepi Cima - Graftek Imaging Inc.**  
 3601 South Congress Avenue, Bldg C - 104  
 Austin, Texas, 78704, USA.  
 Phone (800) 441-2118 ext 106.  
 e-mail: pepi@graftek.com.

### Contacts

**Ing. Gian Luca Pizzocolo (General Manager):** g.pizzocolo@ipses.com  
**Dott. Cesare Liguori (System Manager):** c.liguori@ipses.com  
**Dott.ssa Cinzia Mancuso (Analysis Specialist):** c.mancuso@ipses.com