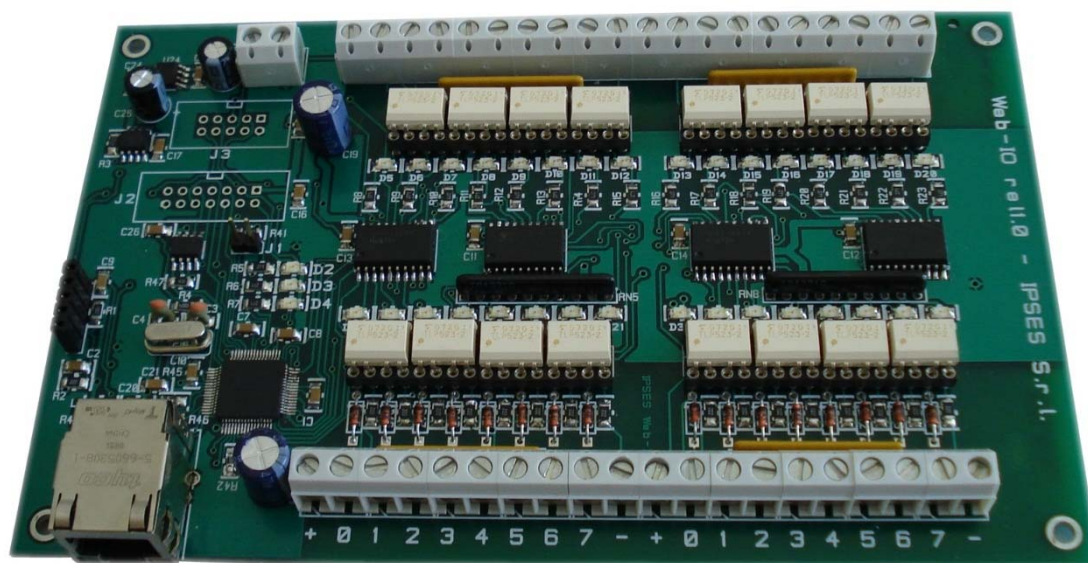


WEB-IO Control Unit
USER MANUAL

Rel. 01.06.0001
(Hardware code: WEB-IO)



Information provided in this manual is property of IPSES S.r.l. and must be considered and treated as confidential.

This publication can only be reproduced, transmitted, transcribed or translated into any human or computer language with the written consent of IPSES S.r.l.

Information in this documentation has been carefully checked and is believed to be accurate as of the date of publication; however, no responsibility is assumed of inaccuracies. IPSES will not be liable for any consequential or incidental damages arising from reliance on the accuracy of this documentation.

Information contained in this manual is subject to change without notice and does not represent a commitment on the part of IPSES. The design of this instrument is subject to continue development and improvement. Consequently, the equipment associated to this document may incorporate minor changes in detail from the information hereafter provided.

All brand or product names are trademarks or registered trademarks of their respective holders.

This manual in English is the original version.

Printed in Italy

Copyright © 2009-2016 IPSES S.r.l.

All rights reserved.

GUARANTEE

IPSES warrants to the end-user in accordance with the following provisions that its branded hardware products, purchased by the end-user from IPSES company or an authorized IPSES distributor will be free from defects in materials, workmanship and design affecting normal use, for a period of one year as of the original purchase date. Products for which proper claims are made will, at IPSES's option, be repaired or replaced at IPSES's expense¹.

Exclusions

This Guarantee does not apply to defects resulting from: improper or inadequate installation, use or maintenance; actions or modifications by unauthorized third parties or the end-user; accidental or wilful damage or normal wear and tear.

Making a claim

Claims must be made by contacting IPSES office within the guarantee period.

Please, contact:

IPSES S.r.l. - Via Suor Lazzarotto, 10 - 20020 Cesate (MI) Italy

Tel. (+39) 02 39449519 – (+39) 02 320629547

Fax (+39) 02 700403170

<http://www.ipses.com> - e-mail: support@ipses.com

Limitation and Statutory Rights

IPSES makes no other warranty, guarantee or like statement other than as explicitly stated above and this Guarantee is given in place of all other guarantees whatsoever, to the fullest extent permitted by law. In the absence of applicable legislation, this Guarantee will be the end-user's sole and exclusive remedy against IPSES.

General Provisions

IPSES makes no express warranties or conditions beyond those stated in this warranty statement. IPSES disclaims all other warranties and conditions, express or implied, including without limitation implied warranties and conditions of merchantability and fitness for a particular purpose.

IPSES's responsibility for malfunctions and defects in hardware is limited to repair and replacement as set forth in this warranty statement.

IPSES does not accept liability beyond the remedies set forth in this warranty statement or liability for incidental or consequential damages, including without limitation any liability for products not being available for use or for lost data or software.

¹ With the exclusion of shipping costs for and from IPSES's development office.

WARNING!

ELECTRICAL DEVICES COULD DAMAGE EQUIPMENT OR PROPERTY OR CAUSE PERSONAL INJURY

This guide contains instructions and technical features of the WEB-IO Control Unit.

Read with attention before attempting to install.

It is the responsibility of the technician to undertake all the safety rules provided by the law during the installation and the use of this device.

For any information which is not contained in this guide, please contact:

IPSES S.r.l. - Via Suor Lazzarotto, 10 - 20020 Cesate (MI) Italy

Tel. (+39) 02 39449519 – (+39) 02 320629547

Fax (+39) 02 700403170

<http://www.ipses.com> - e-mail: support@ipses.com

TABLE OF CONTENTS

TABLE OF CONTENTS	5
REVISION HISTORY	6
GENERAL FEATURES	8
CARD DESCRIPTION	9
<i>OUTPUTS</i>	11
<i>INPUTS</i>	12
<i>EXAMPLE OF USAGE</i>	13
RTCLOG MODULE DESCRIPTION	14
OPERATION MODES.....	15
STATUS LED	15
POWER SUPPLY	16
ETHERNET MODULE	17
NETWORK SERVICES.....	18
ADDRESSES CONFIGURATION	18
<i>REMOTE CONTROL SERVICE</i>	20
<i>http</i> SERVER	21
<i>telnet</i> SERVER.....	39
SNMP SERVER.....	43
PROBLEMS RESOLUTION:.....	46
DEMO SOFTWARE	47
TCP/IP ADDRESS CONFIGURATOR SOFTWARE	54
PRODUCT CODE	59
TECHNICAL FEATURES.....	59
IPSES I/O CARD AVAILABLE MODELS	61
CONTACTS	65
SUPPORT INFORMATION.....	66
PROBLEM REPORT.....	66
ENGINEERING PROBLEM REPORT.....	67

REVISION HISTORY

Manual revision history

Revision/ Date	Change description	Author
01.00.0001 July, 2009	First version Released	Rivolta A.
01.01.0000 September, 2009	Added description of the jumper in "Card description" paragraph; added description of software configuration in "Addresses configuration" paragraph; modified the descriptions and pictures in "http server", "telnet server" and "Demo software" paragraphs due to firmware and software upgrade. Updated the command list in "telnet server" paragraph. Added the maximum board thickness in "Technical features" paragraph. Added TPC/IP Address configuration software description.	Rivolta A. Mancuso C.
01.02.0000 April, 2010	Added description of connectors in "Card description" paragraph. Added description of RTCLOG module, updated command list for telnet server and modified the description and pictures in "http server", "telnet server" and "Demo software" paragraphs. Added description of Bootloader function in "http server" paragraph and modified the "Functioning Modes" paragraph. Added description and pictures for the management of the SNMP server, in the "SNMP server" paragraph.	Rivolta A.
01.02.0001 July, 2010	Updated command list for telnet server due to a firmware upgrade and modified description of paragraph "Power Supply".	Rivolta A.
01.02.0002 November, 2010	Updated "RTCLOG module description" paragraph. Added paragraph "Ethernet Module". Added paragraph "I/O Management through http". Updated "telnet Server" paragraph. Added description for storing trap parameters in the "SNMP Server" paragraph. Updated section "Other I/O cards available"	Rivolta A.
01.03.0000 December, 2010	Added "Remote Control Service" paragraph. Added SMTP client and Remote Control description in "http Server" paragraph. Updated "telnet Server" paragraph.	Rivolta A.

01.04.0000 April, 2011	Added Security Function in "Server http" paragraph and updated "I/O Management through http" paragraph.	Rivolta A.
01.04.1000 June, 2011	Added description of Log memory reading service through http page in "http Server" paragraph.	Rivolta A.
01.05.0000 January 2013	New template. Introducing WEB-IO 30. Extension of Bootloader session in " <i>Http server</i> ". Trap working in " <i>Trap events</i> ". Second telephone number	Bottaccioli M.
01.06.0000 August 2014	Update PLC function in " <i>Http server</i> " and " <i>Telnet server</i> " paragraphs.	Rivolta A.
01.06.0001 August 2016	Added ISO 9001:20015 logo	Bottaccioli M.

GENERAL FEATURES



WEB-IO is a control unit integrated on a *European Card Format* (160 x 100 mm – 6,30 x 3,94 inches) equipped with Ethernet interface.

The card needs an external power supply to operate. There are two available version: with power supply from 5V to 9V range, and with power supply from 7V to 32V range.

WEB-IO can check sixteen optocoupled inputs and drive sixteen optocoupled outputs. Both are reciprocally isolated in two groups of eight.

The control and the configuration of the device are achieved through Ethernet interface thanks to an *http* browser or a MIB browser, or a *telnet* client, or using the demo software provided with.

User can set the status of each output at the power-up: this status will be saved in a non volatile memory.

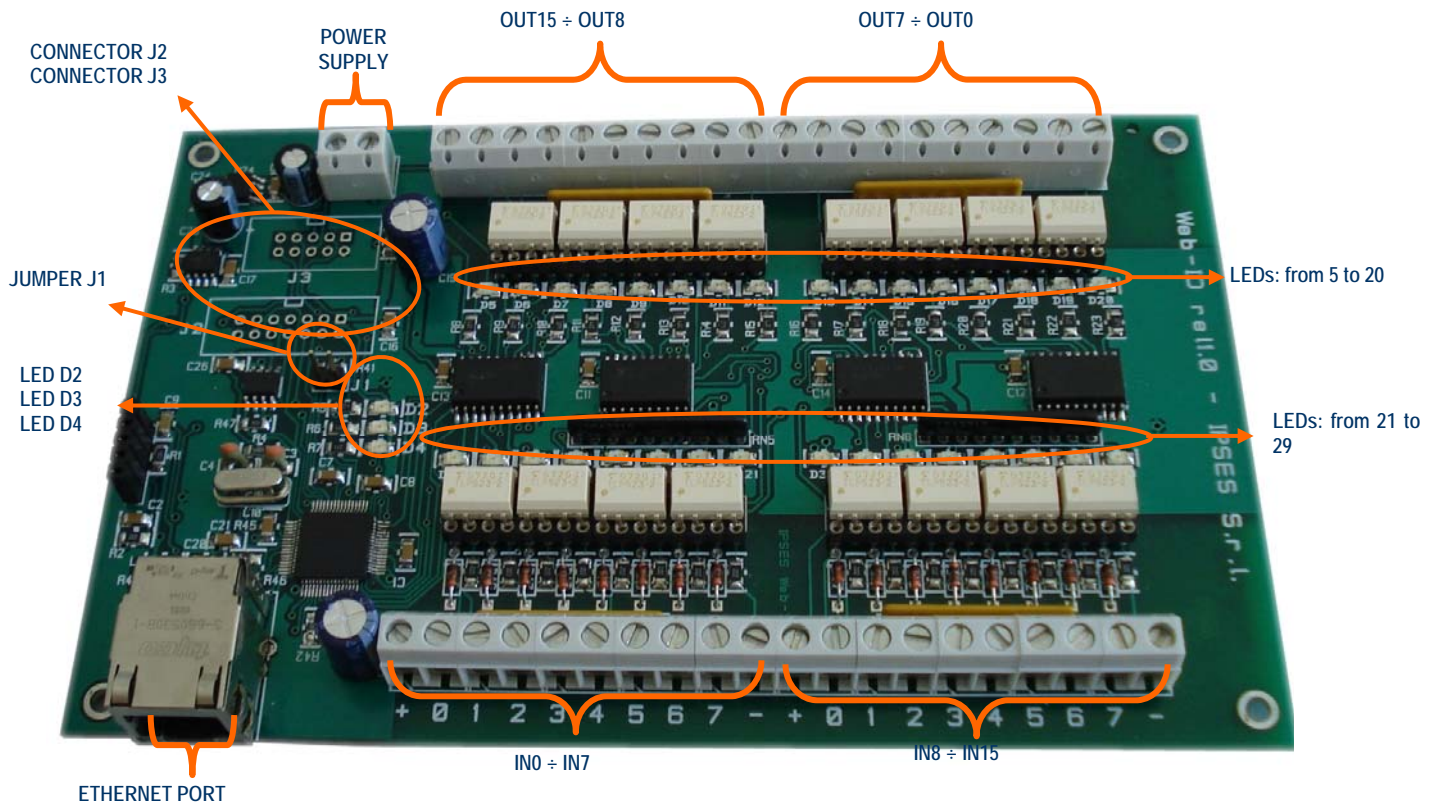
The card allows to perform a firmware upgrade using directly the server implemented on it, so there is not the necessity to use an external hardware or software component.

Beside, an optional external module (RTCLOG) equipped with Real Time Clock system and static memory for log function is available.



CARD DESCRIPTION

WEB-IO card is shown in the picture below: in the upper part of the card the sixteen outputs are divided in two groups of eight (numbered from 0 up to 7 on the card serigraphy), and, similarly, in the lower part of the card there are the sixteen inputs (numbered and divided in the same way).



Picture 1: WEB-IO card

Description of the LEDs:

D2	Green LED: Status LED (see relevant paragraph)
D3	Green LED: Status LED (see relevant paragraph)
D4	Red LED: Status LED (see relevant paragraph)
D5	Red LED: OUT 15 activated
D6	Red LED: OUT 14 activated
D7	Red LED: OUT 13 activated
D8	Red LED: OUT 12 activated
D9	Red LED: OUT 11 activated
D10	Red LED: OUT 10 activated
D11	Red LED: OUT 9 activated
D12	Red LED: OUT 8 activated
D13	Red LED: OUT 7 activated

D14	Red LED: OUT 6 activated
D15	Red LED: OUT 5 activated
D16	Red LED: OUT 4 activated
D17	Red LED: OUT 3 activated
D18	Red LED: OUT 2 activated
D19	Red LED: OUT 1 activated
D20	Red LED: OUT 0 activated
D21	Green LED: V_{high} applied at IN 7
D22	Green LED: V_{high} applied at IN 6
D23	Green LED: V_{high} applied at IN 5
D24	Green LED: V_{high} applied at IN 4
D25	Green LED: V_{high} applied at IN 3
D26	Green LED: V_{high} applied at IN 2
D27	Green LED: V_{high} applied at IN 1
D28	Green LED: V_{high} applied at IN 0
D29	Green LED: V_{high} applied at IN 15
D30	Green LED: V_{high} applied at IN 14
D31	Green LED: V_{high} applied at IN 13
D32	Green LED: V_{high} applied at IN 12
D33	Green LED: V_{high} applied at IN 11
D34	Green LED: V_{high} applied at IN 10
D35	Green LED: V_{high} applied at IN 9
D36	Green LED: V_{high} applied at IN 8

Description of the jumper:

J1	Hardware reset with factory parameters restoration / Address Configuration mode (see paragraph "ADDRESSES CONFIGURATION")
----	---

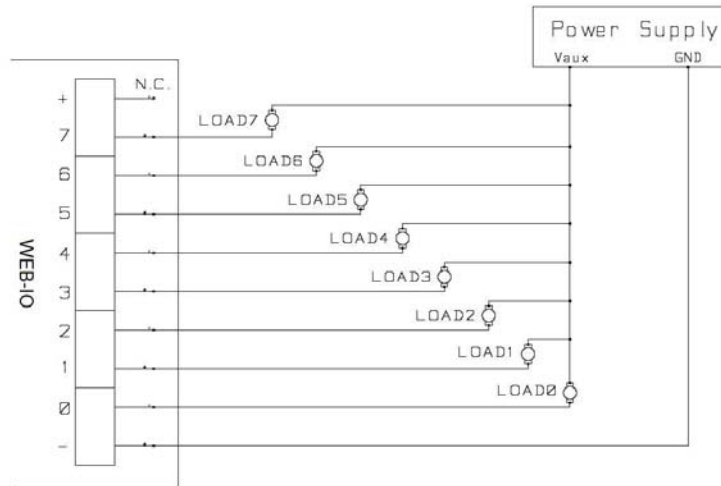
Description of the connectors for the expansion module:

J2 - J3	Connectors for RTCLOG module
---------	------------------------------

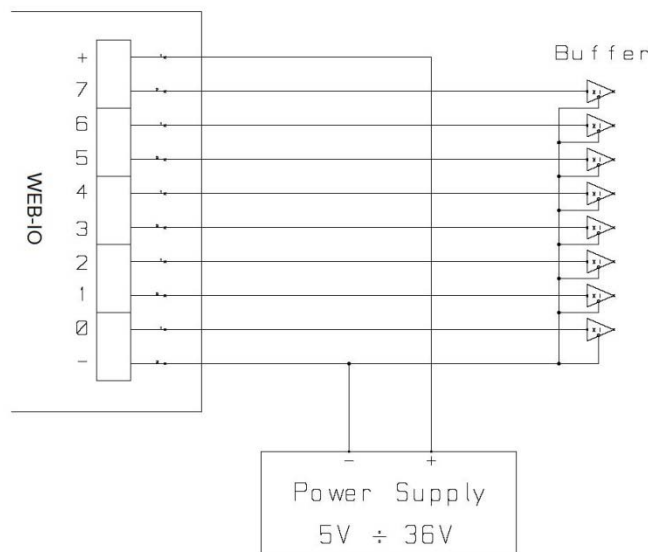
OUTPUTS

The sixteen outputs are completely opto-isolated, both among them in two groups of eight and towards all signals on the device.

Here below there are the diagrams of two typical connections of external device to WEB-IO card: in the first case (Picture 2a), the card will manage directly some loads (with maximal current of 150mA for each output). In the second case (Picture 2b), the card is connected to a high impedance device (i. e. the inputs of a PLC).



Picture 2a: diagram of the output connections: directly managing of loads



Picture 2b: diagram of the output connections: connection to a high impedance device

Output status is displayed by LEDs placed near every connector (LED from D5 to D20, showed in Picture 1).

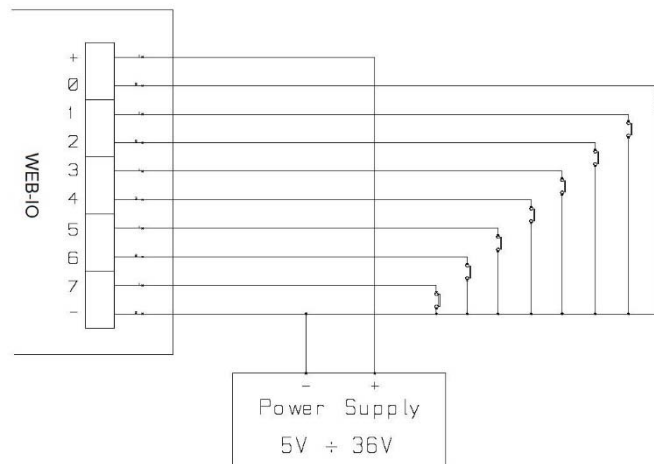
INPUTS

The sixteen inputs are completely opto-isolated, both among them in two groups of eight and toward all signals on the device.

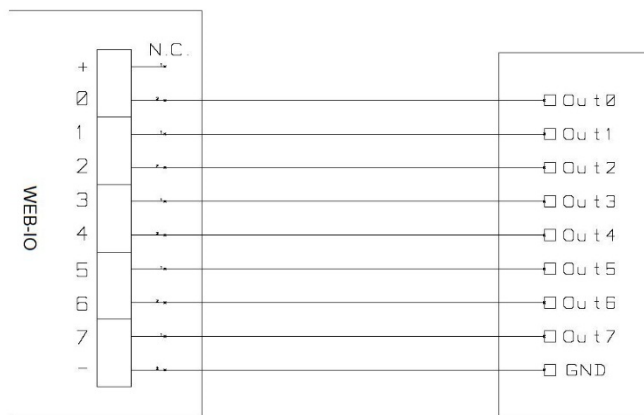
We suggest to connect inputs following one of the two diagrams displayed below:

-Picture 3a: use this way in case inputs have to detect the pressure from a switch or an open collector output.

-Picture 3b: use this way in case inputs are directly controlled by a voltage.



Picture 3a: diagram of input implementation: detection of the pressure from a switch or an open collector output

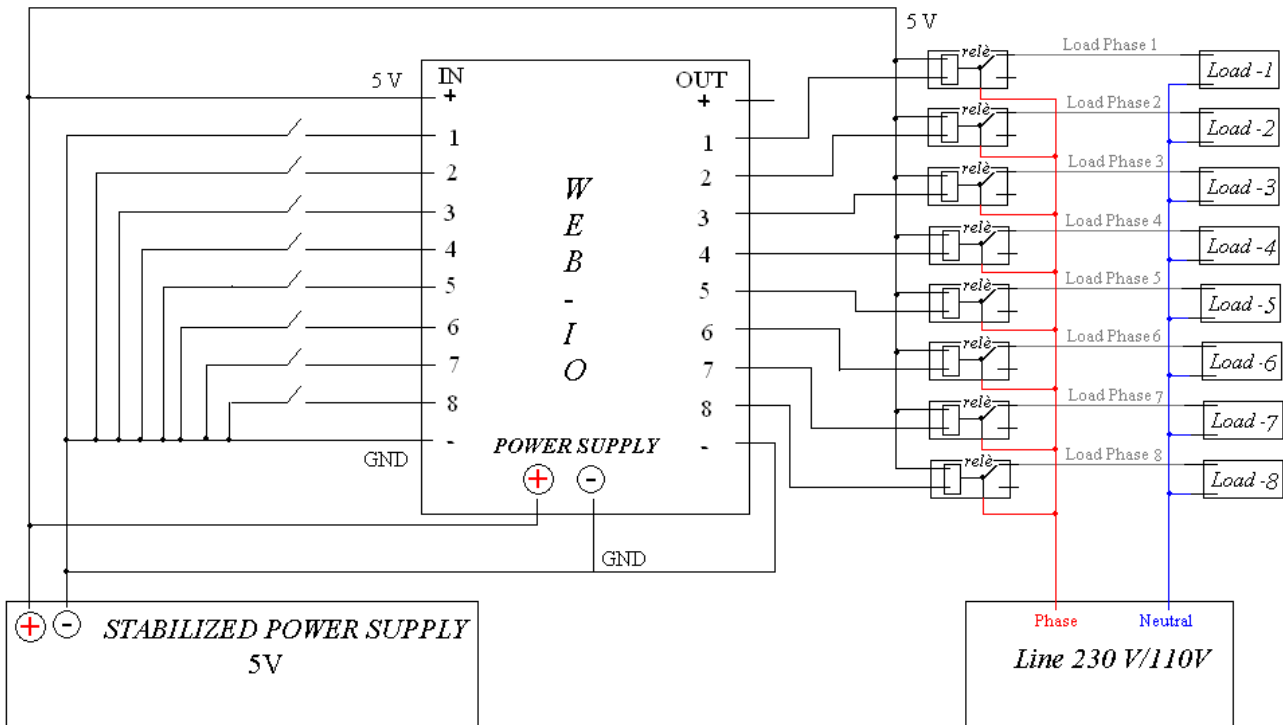


Picture 3b: diagram of input implementation: inputs directly controlled by a voltage

Input status is displayed by LEDs placed near every connector (LED form D21 to D36, showed in Picture 1).

EXAMPLE OF USAGE

The following example shows how you can connect WEB-IO for managing an external load with line supply. Picture 4 shows how to connect WEB-IO card with an external supply load.

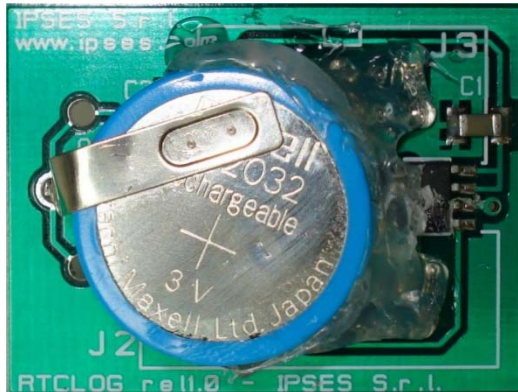


Picture 4: external load with line supply management

RTCLOG MODULE DESCRIPTION

The RTCLOG external module, shown in Picture 5, is equipped with a log memory, a Real Time Clock component and a Li-Ion (rechargeable) battery which allows to update the timetable when the module is not powered on. The battery recharge is performed every time the module is properly connect to the card.

The log memory can store up to 4093 sample as described in the “*http Server*” paragraph.



Picture 5: RTCLOG module



WARNING!

Pay close attention to connect properly pins module and expansion receptacles card. Otherwise the module and/or the card may be damaged irretrievably.

The RTCLOG expansion module must be inserted or removed only when the card is not powered on. Otherwise the module or the card may be damaged irretrievably.

OPERATION MODES

The firmware of the board implements two different modes, as specified in the following table.

Mode	Description
<i>Operative</i>	This is the normal mode. During this status, the control of the outputs and PLC and Timeout functions are fully available. The interaction with the board can be made by web browser, MIB browser, telnet, or demo software.
<i>Bootloader</i>	Using this mode, the board waits for a firmware upgrade or a return to Operative mode. In this status all the outputs and PLC and Timeout function are disabled. The interaction with the board can only be made by a web browser.

STATUS LED

D2, D3 and D4 LEDs indicate the status of the system.

In *Operative* mode the LED configuration is the following one:

LED D2	LED D3	LED D4	Status Description
On	On	Blinking	Board correctly configured and operative
Blinking	Blinking	/	Hardware resetting to factory settings or software TCP/IP address configuration
On	Blinking	/	<i>telnet</i> password modifying

If D2 or D3 are Off, there is, respectively, a hardware or a firmware initialization error.

In *Bootloader* mode D2, D3 and D4 LEDs light up repetitively in sequence, until one remains in this status.

POWER SUPPLY

The board is equipped with a connector (see Picture 1 at page 8: the connector is labeled as "POWER SUPPLY") which allows to connect an external voltage supply to power the board: its value must be included from +5V up to +9V, or from +7V up to +32V, based on the model.

The voltage supply can be used also as "*Power Supply*", as indicated in Picture 2b and 3a: by these way, the galvanic isolation of the board between I/O and control logic will be lost, so the GNDs must be connected together to avoid irreversible damage of the card.



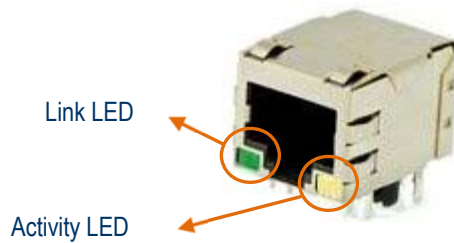
WARNING!

The maximum supply voltage must not exceed +9Vdc/+32Vdc, depends on selected model: in case of use of higher voltage the components of the board may damage irremediably. It is recommend to handle the board with care: the area around the switching regulator works at high temperature and it is possible to burn oneself.

ETHERNET MODULE

The physical layer of the Ethernet network protocol supports the 10Base-T standard and it is fully compliant with the 10/100/1000Base-T standard. WEB-IO can be connected to any commercial router or switch without problems.

The physical connection between the card and the network cable is made by the RJ45 connector, as shown in the following picture:



The green LED (*Link* LED) indicates the detection of the Ethernet network, the yellow LED (*Activity* LED) is on during the communication packets Tx/Rx activity.

NETWORK SERVICES

WEB-IO board hosts a server for *http* service, a server for *telnet* service, a server for **SNMP** (Simple Network Management Protocol) service and a client for **SMTP** (Simple Mail Transfer Protocol) service. Data transfer is based on a TCP/IP protocol: the protocol configuration parameters can be modified only from *http* service. To validate these changes a password named *http service password* is required.

Similarly, to access *telnet* service an authentication password named *telnet service password* is required.

Both passwords are case-sensitive alphanumerical strings with a valid length included between 1 and 8 characters. The default value for both is "ipses" and it can be modified only from the relevant service.

The SNMP service supports both V1 and V2c versions. The last one implements a community-based service access, which is an authentication access method. It is possible to set up to 3 different communities both for read and write operations.

The default communities are:

- *Write Community* ("private", "write", "public")
- *Read Community* ("public", "read", "").

Each specified community can be 8 chars maximum length; if none community is specified, the access to the pertinent service (read and/or write) is blocked.

The SMTP client allows to send e-mails alerts to different user-configurable recipients, based on status inputs change events. This service can be configured only by *http* pages.

ADDRESSES CONFIGURATION

The following table shows the default configuration parameter of each board:

Parameter	Value
Hostname	WEBIOBOARD
IP address	192.168.0.16
Subnet mask	255.255.255.0
Gateway address	192.168.0.4
Primary DNS	193.70.152.15
Secondary DNS	0.0.0.0
<i>http</i> password	ipses
<i>telnet</i> password	ipses
Startup status outputs	all OFF
Security Level	0

The addresses for Primary DNS server and Secondary DNS server must be modified according to the addresses assigned from the network's provider where you connect your board. For more information contact your network provider.

It is possible to restore factory parameters following this procedure listed below:

- disconnect power supply from the board
- insert jumper J1 (see Picture 1)
- connect power supply to the board

If the procedure is successfully completed, D2 and D3 LEDs will flash alternatively for about 3 seconds. At this point it will be possible to remove jumper J1 from the board.

If TCP/IP parameters of the network are not compatible with default board parameters, or if the IP address is already assigned to another device, you can reconfigure them choosing between the following two procedures:

❖ Manual configuration procedure

- connect the board locally and directly to a PC equipped with a network card (without connect it to any network).
- verify that in the *Property* items under *Local Network Connection Status (LAN)* window located in *Control Panel » Network Connection Properties* path the IP address of your PC is 192.168.0.1 and their Subnet Mask is 255.255.255.0. Otherwise set these values in their respective fields.
- power on the board and access to *http* service typing in the URL browser the current board address (by default <http://192.168.0.16/>).
- go to the *TCP/IP Configuration* page, then set the new parameters and save them. Verify Save & Reboot operation works successfully.
- install the card in the network and access it with new parameters.

❖ Software configuration procedure

- with the board already powered on, insert the jumper J1.
- Run the address configurator software "WEB-IO Address Configurator.exe" included in the installer CD provided with the board, and follow the steps described in the paragraph "TCP/IP ADDRESS CONFIGURATION SOFTWARE".
- at the end of the configuration, remove jumper J1.

IMPORTANT: do not disconnect the power supply during the address configuration procedure: a supply reset restore factory parameters.

REMOTE CONTROL SERVICE

The Remote Control service, based on P2P paradigm, allows the bidirectional communication and the reciprocal control between two WEB-IO family cards, wherever they are. The transportation protocol is UDP.

This service is especially useful if you need to acquire and process signals in locations distant from each other.



The previous picture shows the communication flux: when the service is active on both cards, the inputs status of the Board A will be replied on the outputs of the Board B, and in the same way, the inputs status of the Board B will be replied on the outputs of the Board A.

On each card is not possible to manually set the outputs status until the service is active.

The service parameter configuration is described in the following *http Server* paragraph.

http SERVER

The *http* server implemented on the board allows to manage up to 3 simultaneous sessions.

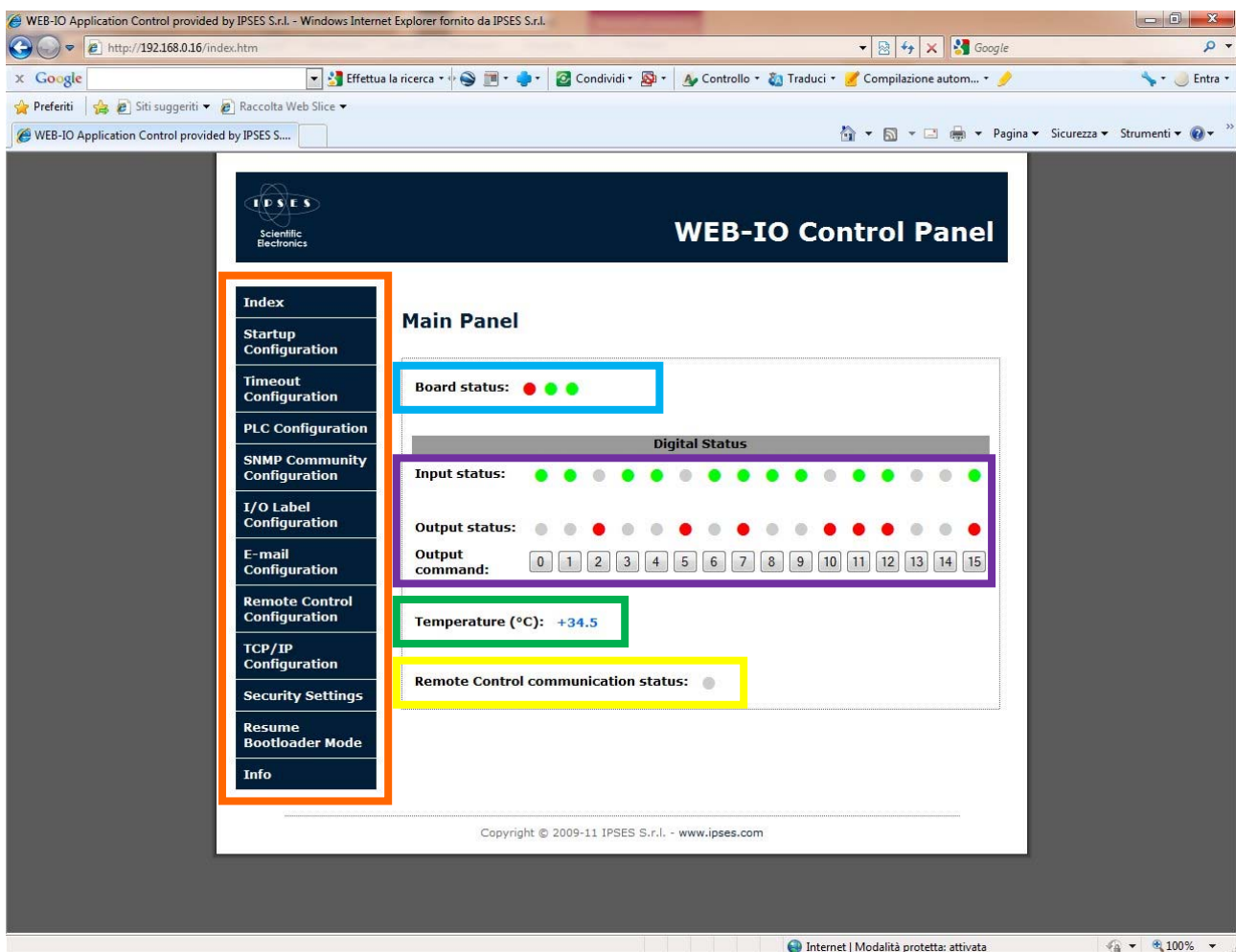
To access the server, open a web browser and type the board IP address <http://192.168.0.16/> in the URL field: you will be redirect to the main page, *index.htm*, as shown in Picture 6.

The implemented server was tested and was resulted fully compliant with the following browser:

- Microsoft Internet Explorer 9.0.8112.16421
- Mozilla Firefox 4.0.1
- Google Chrome 11.0.696.77
- Apple Safari 5.0.5 (7533.21.1)

All the web pages fulfill the W3C standard.

To avoid undesired accesses to control function of the board we have developed a multilevel security function: its description is demanded later in this paragraph.



Picture 6: *http* server index page.

On the left side of the WEB-IO control panel there is the menu (surrounded in orange in Picture 6) which allows to access the pages implemented on the *http* server.

Board status (surrounded in blue) shows D2, D3 and D4 status LEDs mounted on the card.

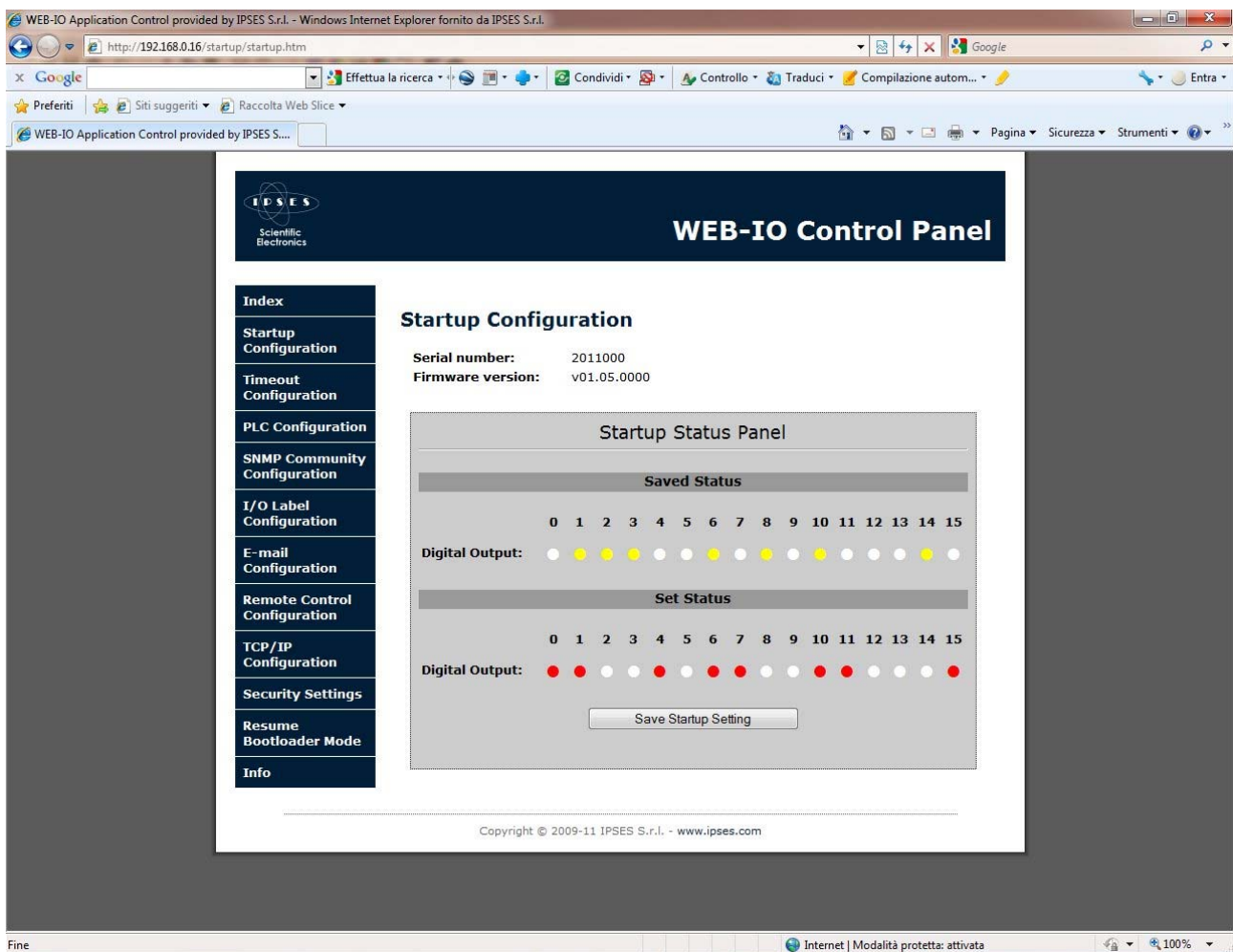
Input status and *Output Status* fields, surrounded in violet, report respectively the current status of each inputs and outputs. *Output command* buttons, labeled from 0 to 15, drive the outputs: each button pressure set or reset the relative output. If the freezing function for http page commands is enabled, these buttons are disabled.

The filling colors used in the *http* page are correspondent to the LEDs mounted on the card.

Temperature field, surrounded in green, shows the measured temperature by the sensor; if the board is not equipped with the temperature sensor, a message is displayed.

The *Remote Control communication status* LED, surrounded in yellow, shows the current status of the Remote Control service. If this service is disabled the LED is grey, else if the service is active and the communication with another WEB-IO family card is established the LED is green, instead, if the communication fails, the LED is yellow. In both of the last two cases the *Output command* buttons are disabled.

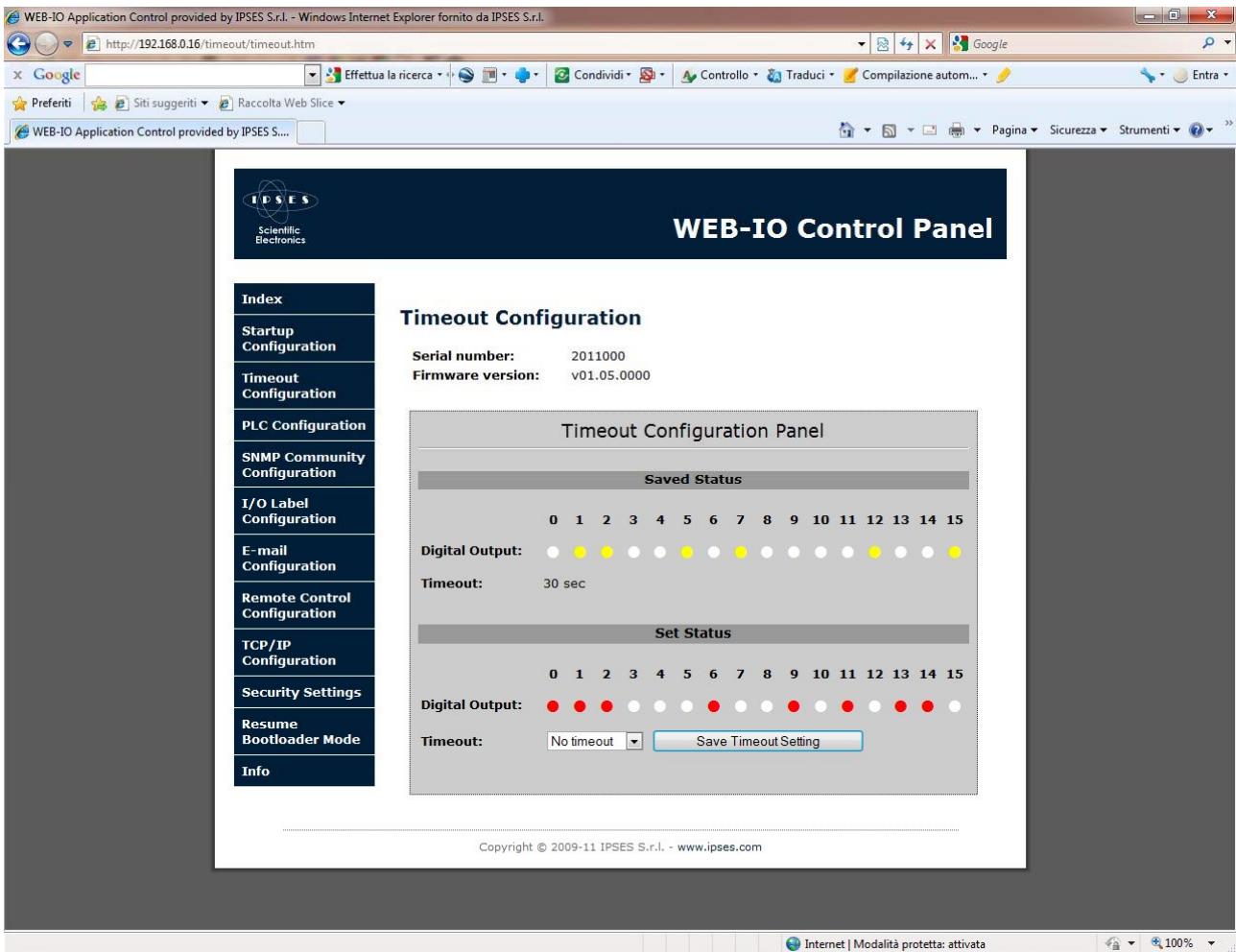
If the communication is lost the current page shows the following error message: "Connection to WEB-IO board was lost".



Picture 7: Startup configuration page.

Startup Configuration page, shown above in Picture 7, allows to read board parameters (like *Serial Number* and *Firmware Version*), and to set the startup output status through the *Startup Status Panel* form. *Saved Status* section displays the actual startup configuration stored in memory: yellow LEDs indicate outputs of which configuration is already saved. Clicking on LEDs of *Set Status* section it is possible to set the new startup configuration which will be stored only after the pressure of *Save Startup Settings* button.

If the freezing function for http page commands is enabled, the button is disabled.



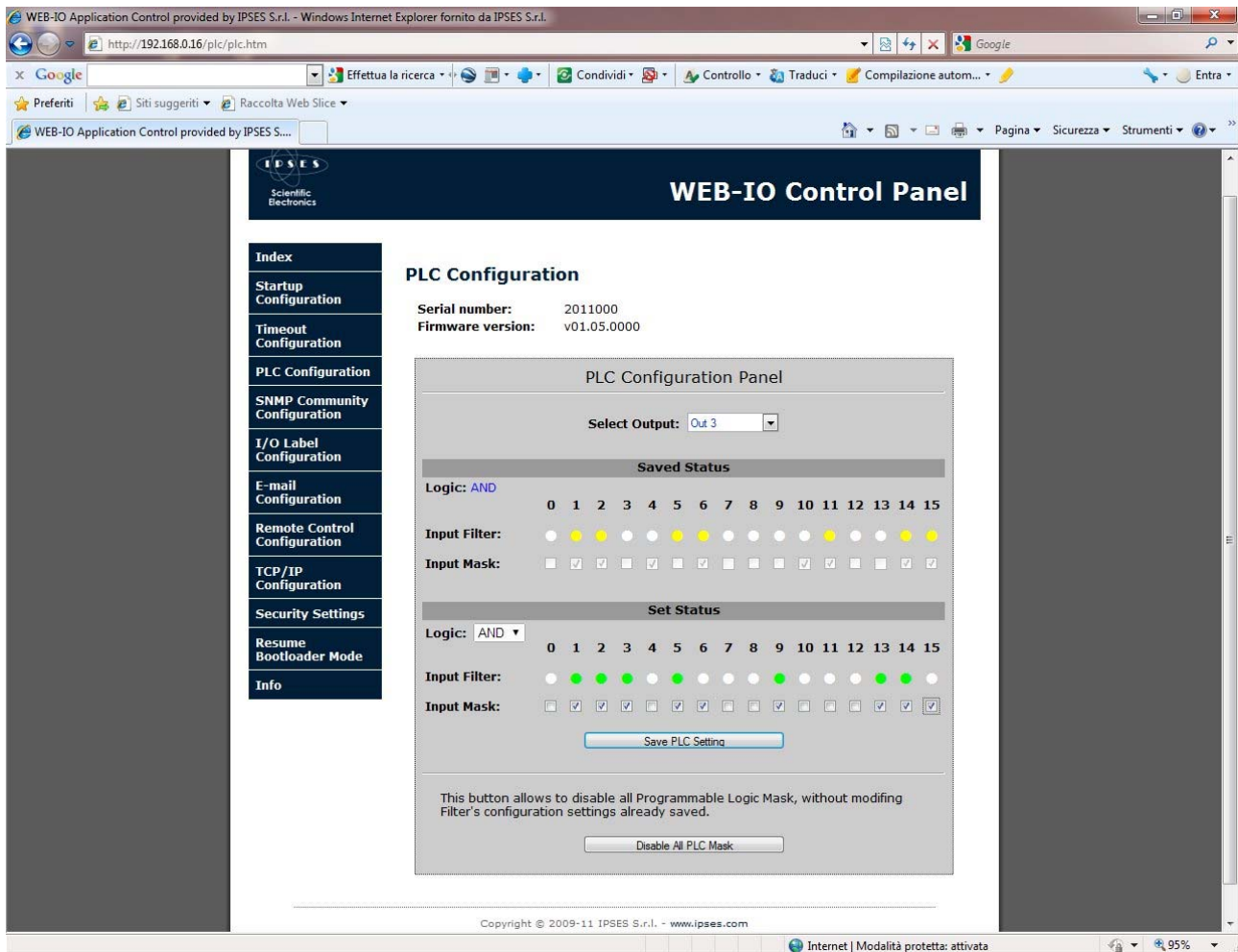
Picture 8: Timeout parameters configuration page.

Timeout Configuration page, shown in Picture 8, allows to read and to set the parameters of the Timeout function. *Saved Status* section display the status of the outputs if the *Timeout* field time elapses with no commands or requests received by the board.

Clicking on LEDs of *Set Status* section it is possible to set new outputs configuration, while *Timeout* field allows to select the new timeout time among the following items: "No timeout", "5sec", "10sec", "30sec", "1min", "5min", "10min", "30min", "1hour". "No timeout" item disables the Timeout function on the board. The *Save Timeout Setting* button stores the new settings on the memory of the board.

If the freezing function for http page commands is enabled, the button is disabled.

The Timeout function has priority over PLC function, described next. When the Timeout function occurs, the outputs will be sets as configured and remain in this status, while any active PLC logic will be temporarily disabled, until the board will not receive a new command or request.



Picture 9: Programmable Logic Configuration (PLC) page.

PLC Configuration page, shown in Picture 9, allows to manage each output based on the customizable status of the inputs (from 0 to 15) and associated Boolean logic control. For example, as shown in picture above, user can set the output n. 3 to switch on when inputs 1-2-3-5-9-13-14 are high and inputs 6-15 are low (other inputs are *don't care*), with AND logic selected.

To do this, select the desired output through the *Select Output* ring in the upper part of the PLC configuration panel. In the *Saved Status* section will be shown the filter and mask values actually stored for the selected output. Clicking on LEDs and checkboxes of the *Set Status* section is possible to set the new inputs filter and mask values, respectively. If an input is not masked, it will be not considered from the logic function, independently of its filter status selection. The *Logic* ring allows to select the Boolean logic to perform the input filtering (AND / OR). To make the new values operative, click on *Save PLC Setting*.

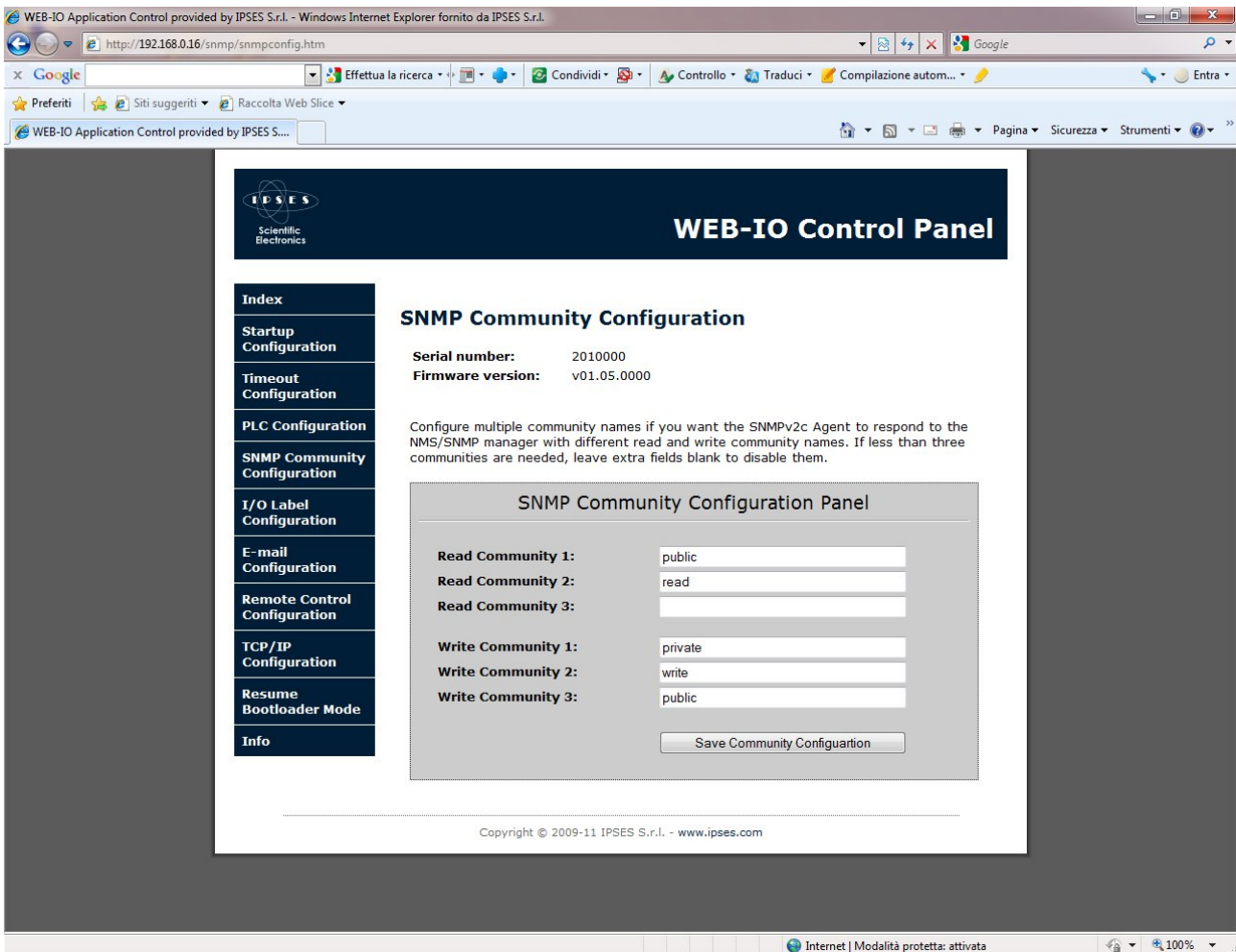
When the PLC function is enabled on an output, the output status will be set according the customizable input status. For this reason, it will be not possible to manually set that output until the PLC function is enable. To do this, user needs to disable the PLC function.

To disable the PLC function on an output, all inputs must be not masked: the relative item in the *Set output* ring will became grey, otherwise it will remain blue.

The *Disable All PLC Mask* button in the lower part of the PLC panel allows to reset and store the mask of each output, without modifying the filter and logic settings.

If the freezing function for http page commands is enabled, both the buttons are disabled.

The *Timeout* function (previously described and shown in Picture 8) has priority over PLC function: if timeout occurs, all PLC enabled functions are temporarily disabled until the board will receive a new command or request.



Picture 10: SNMP Community configuration page.

The *SNMP Community Configuration* page, shown in Picture 10, allows to set the read and write communities for the SNMP server V2c.

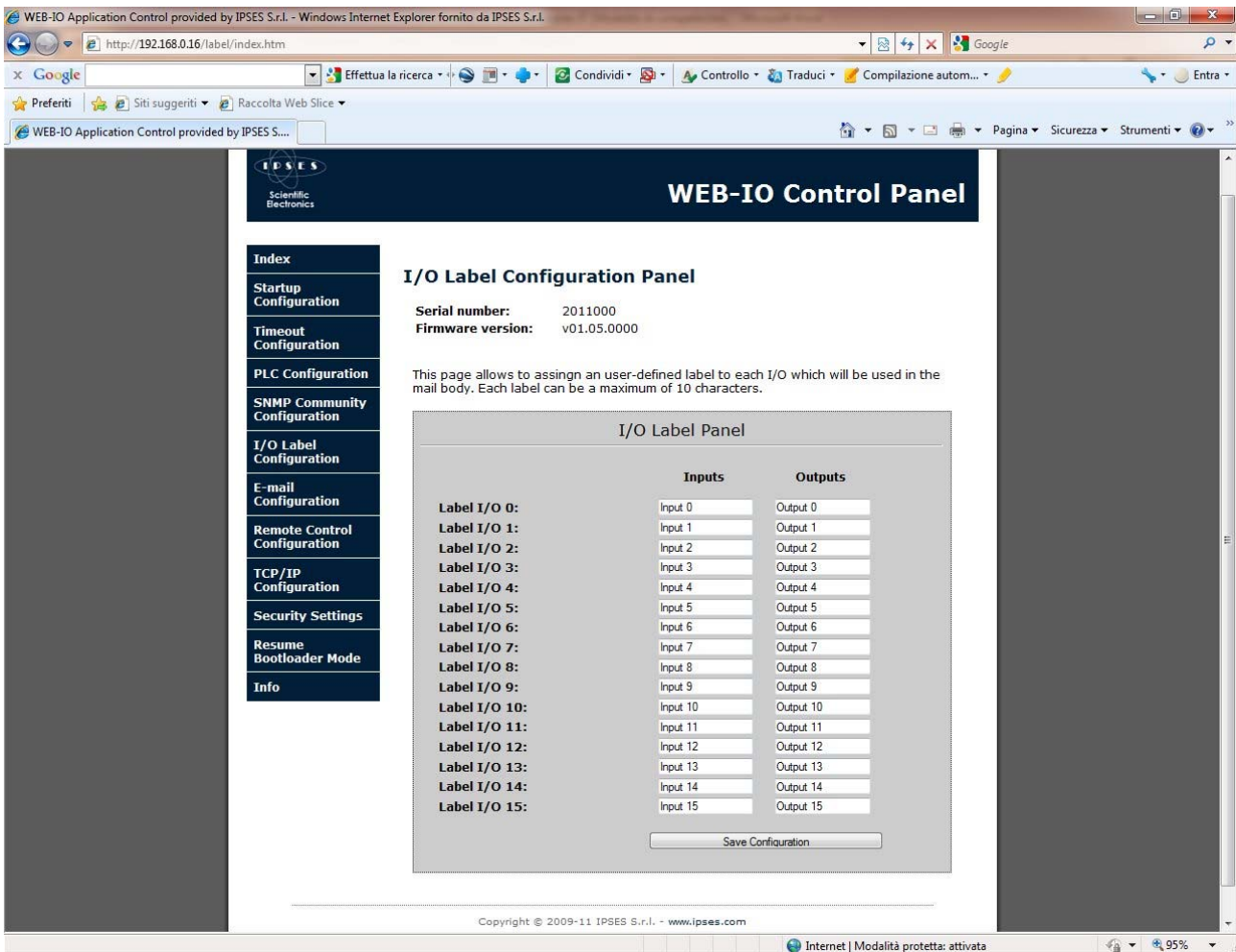
Each community can be a case-sensitive alphanumeric string, with a maximum length of 8 characters. If you do not want to set one or more communities, leave the extra fields blank.

If all fields are left blank, it will be impossible to access to SNMP server.

The queries run in the MIB browser can be evaluated from the SNMP server only if the community with which the request is generated is included in the configuration list.

The button *Save Community Configuration* stores the settings on the board.

If the freezing function for http page commands is enabled, the button is disabled.



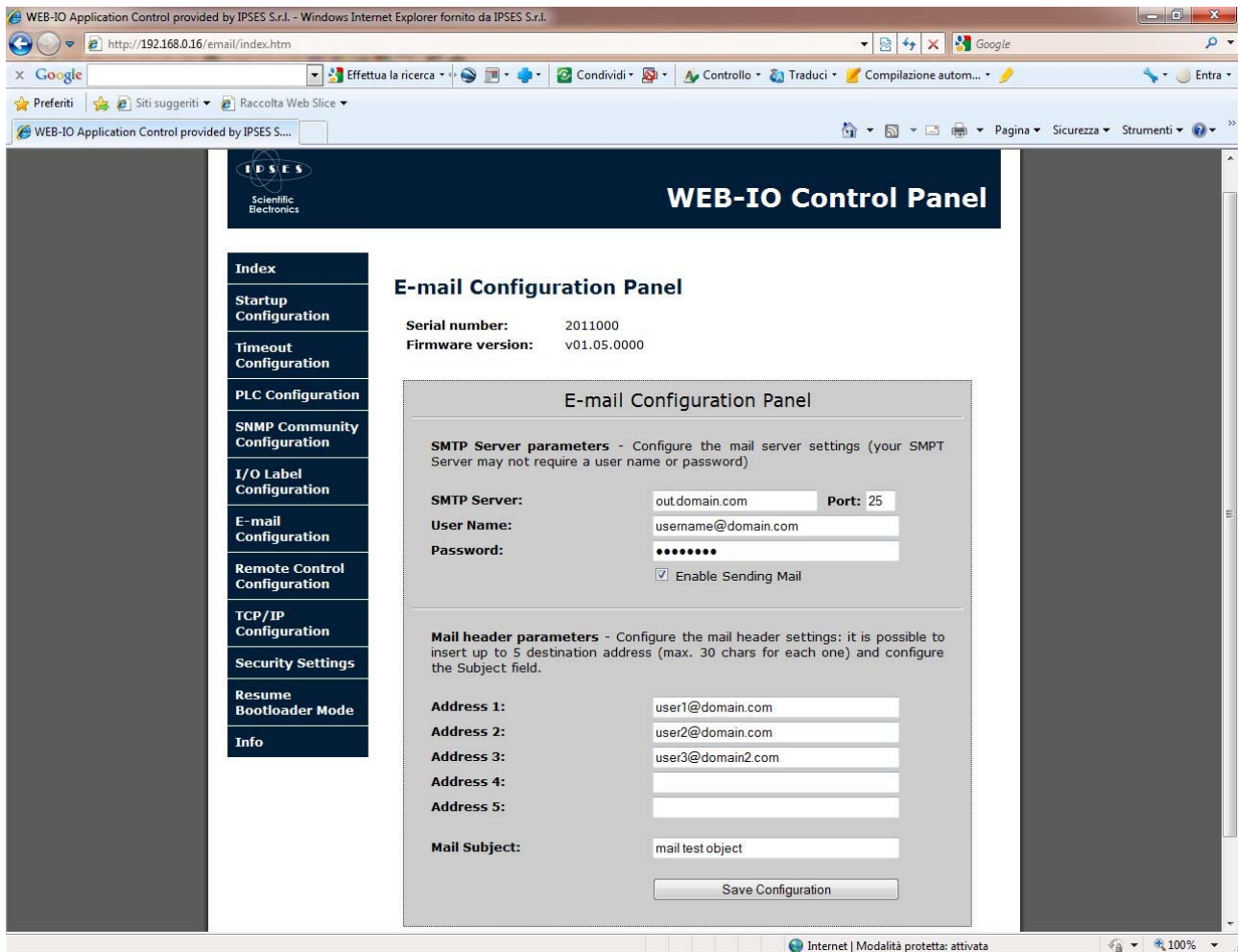
Picture 11: I/O Label configuration page.

The *I/O Label Configuration* page, shown in Picture 11, allows to assign an user-defined label to each input and output. Each label can have a maximum length of 10 characters.

If the freezing function for http page commands is enabled, the button is disabled.

The e-mail generated by the board, as described following, contain the detailed I/O status, each of them identified from the label defined in this page.

The label fields are loaded with the currently stored strings.



Picture 12: E-mail parameters configuration page (SMTP client).

The E-mail Configuration Panel, shown in Picture 12, allows to set the parameters to enable and to process the automatic alert e-mail sending, based on an input status change.

The *SMTP Server parameters* section allows to configure the SMTP server parameters through which the mail is sent:

- *SMTP Server*: mail server address (to use a mail server outbound your local network it is necessary to set a valid DNS address in *TCP/IP Configuration* page).
- *Port*: is the access port of the server (typically port 25).
- *User Name*: is the authentication username to access the mail server.
- *Password*: is the authentication password to access the mail server.

The e-mail client uses extended protocol.

Note: not all the SMTP servers need an authentication access. For further information contact your network administrator or the SMTP server operator.

The *Enable Sending Mail* field allows to enable or disable the mail sending when almost one input status change occurs.

The *Mail header parameters* section allows to set up to 5 different recipient addresses and the "*Object*" field for the e-mail. Each recipient address, formatted as *name@domain.com*, can be maximum 26 characters length, while the *Mail Subject* field can be maximum 30 characters length.

The *Save Configuration* button allows to store the fields and the option selected.

If the freezing function for http page commands is enabled, the button "save configuration" is disabled.

Mail generated by 2010000 board on inputs event.

Input 0: 1
Input 1: 1
Input 2: 0
Input 3: 1
Input 4: 1
Input 5: 0
Input 6: 1
Input 7: 1
Input 8: 1
Input 9: 1
Input 10: 0
Input 11: 1
Input 12: 1
Input 13: 0
Input 14: 0
Input 15: 1

Output 0: 0
Output 1: 1
Output 2: 1
Output 3: 0
Output 4: 0
Output 5: 1
Output 6: 0
Output 7: 1
Output 8: 0
Output 9: 0
Output 10: 0
Output 11: 0
Output 12: 1
Output 13: 0
Output 14: 0
Output 15: 1

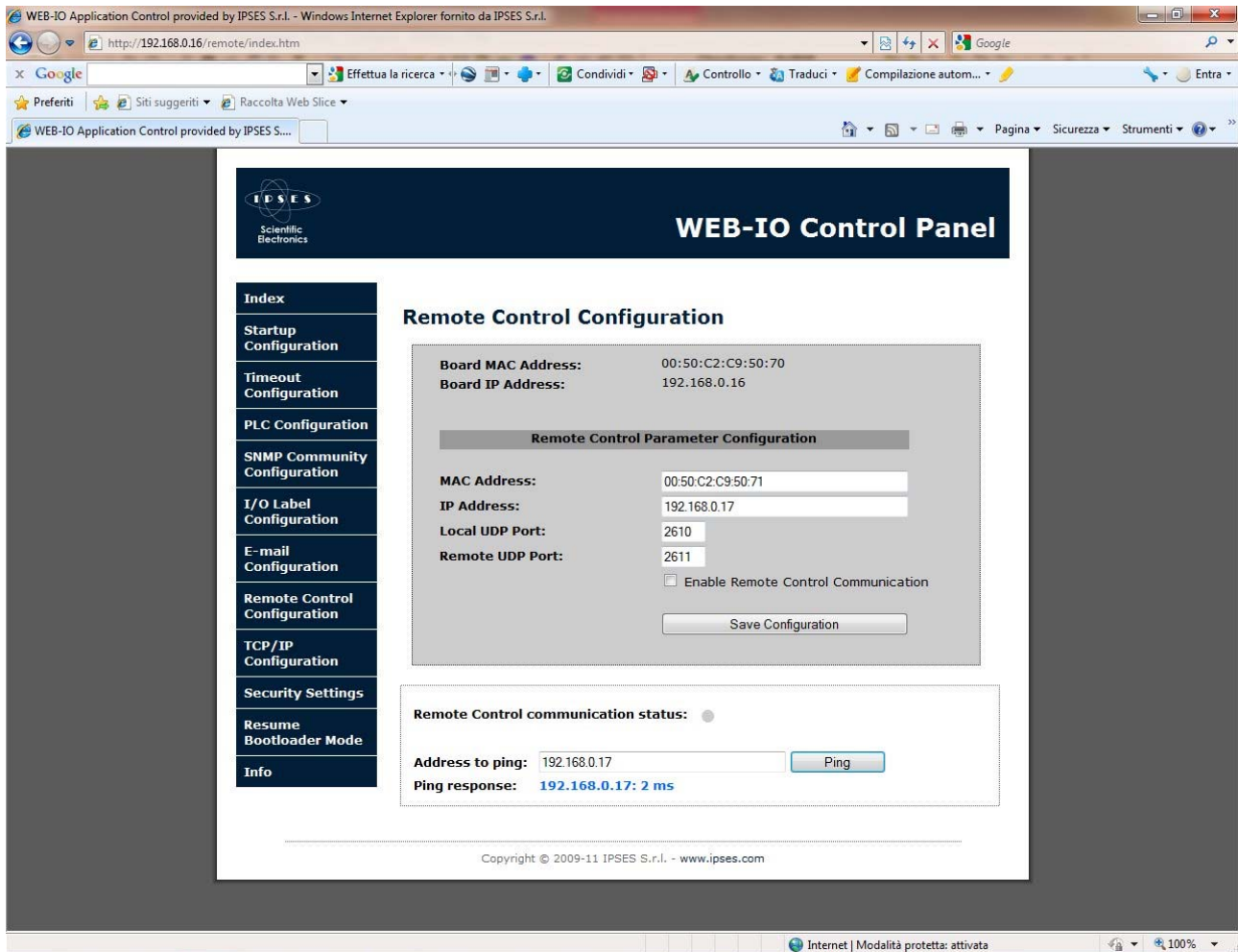
Sending e-mail is an asynchronous process, subjected to the successfully connection established with the mail server. If you cannot receive the mail as expected, be sure the SMTP server and addresses parameters are correct. The *Enable Sending Mail* checkbox should be selected.

The board does not point out an advise if the mail sending fails. The time necessary to generate and process each mail depends on the SMTP server communication. The minimum waiting time between two consecutive mail is 1 second.

A new mail can be generated only when the process related to previous mail is ended.

When a mail process is active, any input status change is ignored: this means that, during this phase, any input changes which may occur in subsequent time instants are neglected. The board will register only the first useful change occurred after the end of current mail elaboration process.

The picture on the left shows an example of generated mail body.



Picture 13: Remote Control service configuration page.

The Remote Control Configuration page, shown in Picture 13, allows to set the configuration parameters for the Remote Control service.

In the upper section of the page the current MAC and IP addresses of the board are displayed.

To establish the communication between two (A and B) WEB-IO family boards user must configure the following parameters in both systems:

- *MAC Address* of the destination board
- *IP Address* of the destination board
- UDP port for incoming packets (*Local UDP Port*)
- UDP port for outgoing packets (*Remote UDP Port*)

The *Local Port* of the board A must be set as the *Remote Port* of the board B, and vice versa.

The user must ensure that the UDP ports selected are not reserved or used by another service.

The *Enable Remote Control Communication* checkbox enables or disables the service.

The *Save Configuration* button stores the fields and the option in memory.

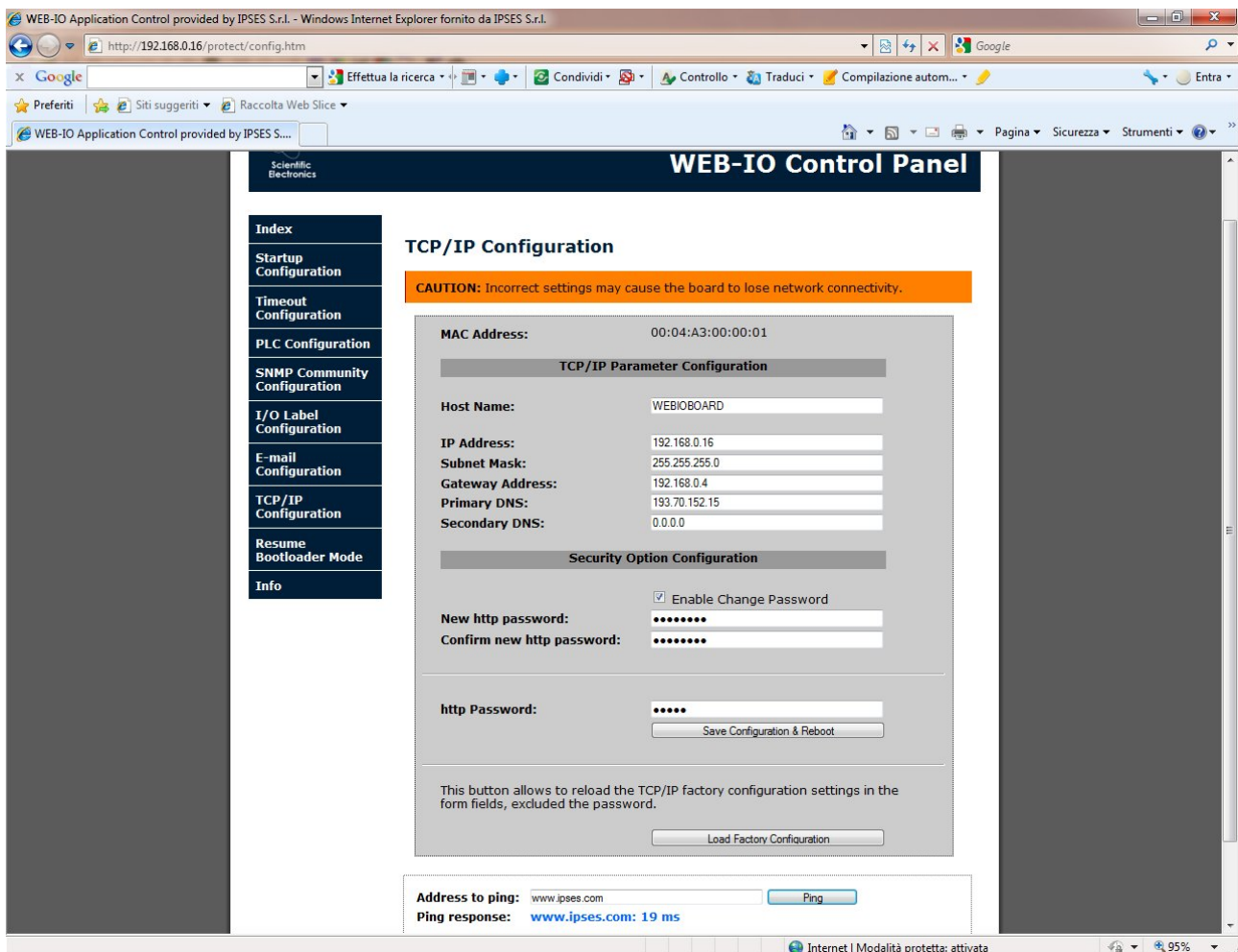
If the freezing function for http page commands is enabled, the button is disabled.

In the lower section of the page is shown the status of the service, thanks to the Remote Control communication status LED. If the service is disabled the LED is grey. If the service is enabled but no incoming packets are detected the LED is yellow. If the packets are detected, the LED is green.

The ping function is useful to test the reachability of the destination board.

Till the Remote Control service is enabled, the PLC and the Timeout functions are disabled and the manual control of the outputs is forbidden.

The firmware that manages the RTCLOG module allows to save the inputs status and the outputs status of the board in the Log memory: if the Remote Control service is enabled and the communication with the board B is detected, the outputs status on board A correspond to the inputs status of the board B. By this way it is possible to log up to 32 inputs status with only one RTCLOG module.



Picture 14: TCP/IP protocol and *http* password configuration page.

TCP/IP Configuration page, shown in Picture 14, allows to modify some TCP/IP protocol parameters and the *http* password of the board.

The hostname can be maximum 16 alphanumeric case-insensitive characters length.

To modify and save these parameters, it is necessary to insert a valid *http* password then press the *Save Configurations & Reboot* button. If the password is invalid or data processing fails, configured parameters will not be saved and you will be redirect to an error page. To come back, click on the appropriate link.

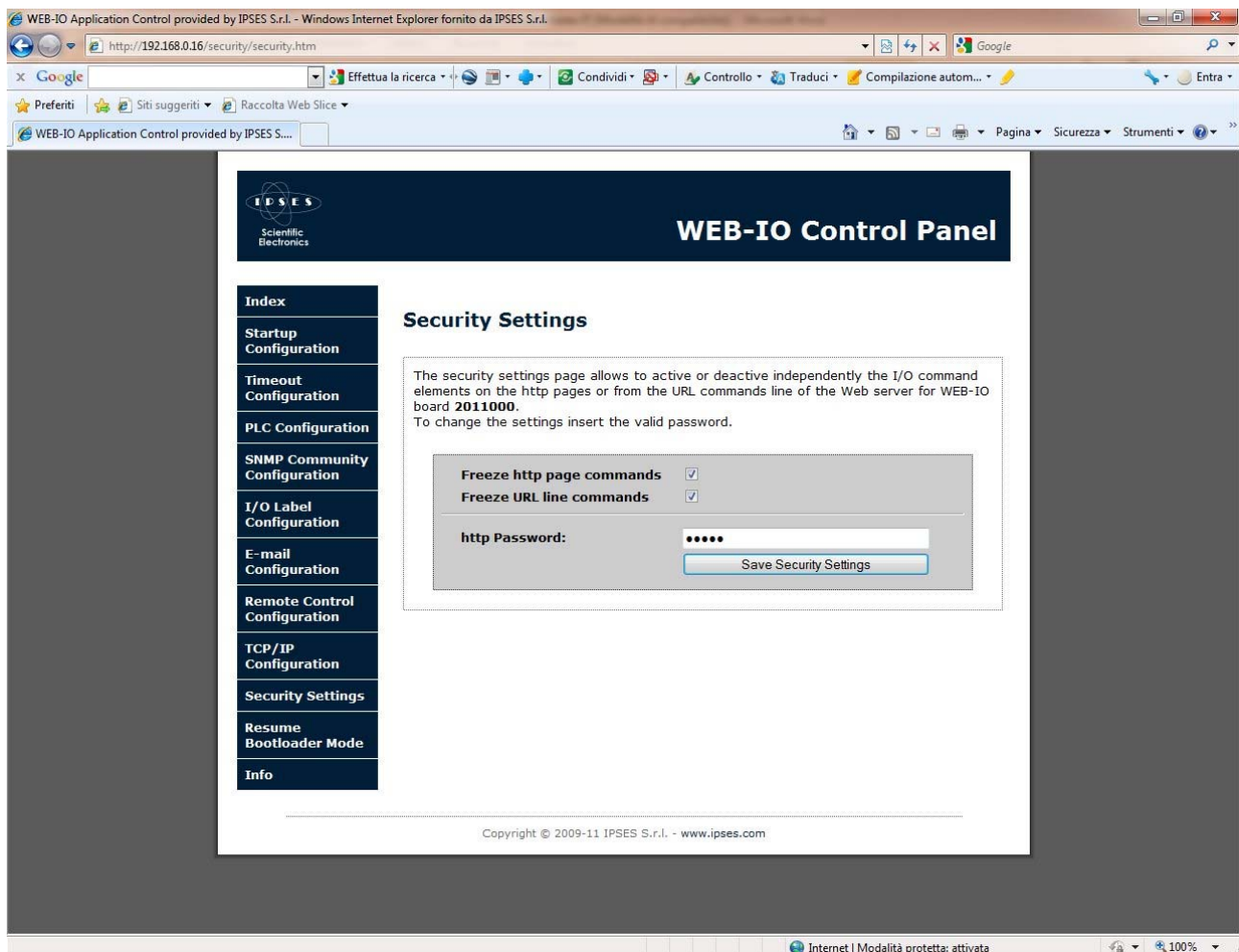
The *Enable Change Password* checkbox allows to insert a new *http* password in the *New Password* and *Confirm New Password* fields.

The *Load Factory Configuration* button allows to restore factory parameters, excepted for the *http* password that will not be modified.

At the end of the page is available the Ping function which allows to verify the connection between card and inserted address. If the communication is lost, the ping section shows the following error message: "*Connection to WEB-IO board was lost*".

Warning: if the saved parameters are invalid or they could not be resolved in your network, you will lose the communication.

To restore all default parameters, follow the procedure described in "ADDRESSES CONFIGURATION" paragraph.



Picture 15: Security settings configuration page.

The Security Settings configuration page, shown in Picture 15, allows to set the security levels, only for functions implemented on the http server. Its purpose is to inhibit the control of the board from unauthorized accesses.

There are 3 security levels:

- Level 0: security option is not enabled;
- Level 1: security on http pages;

- Level 2: security on URL commands, and automatically on http pages.

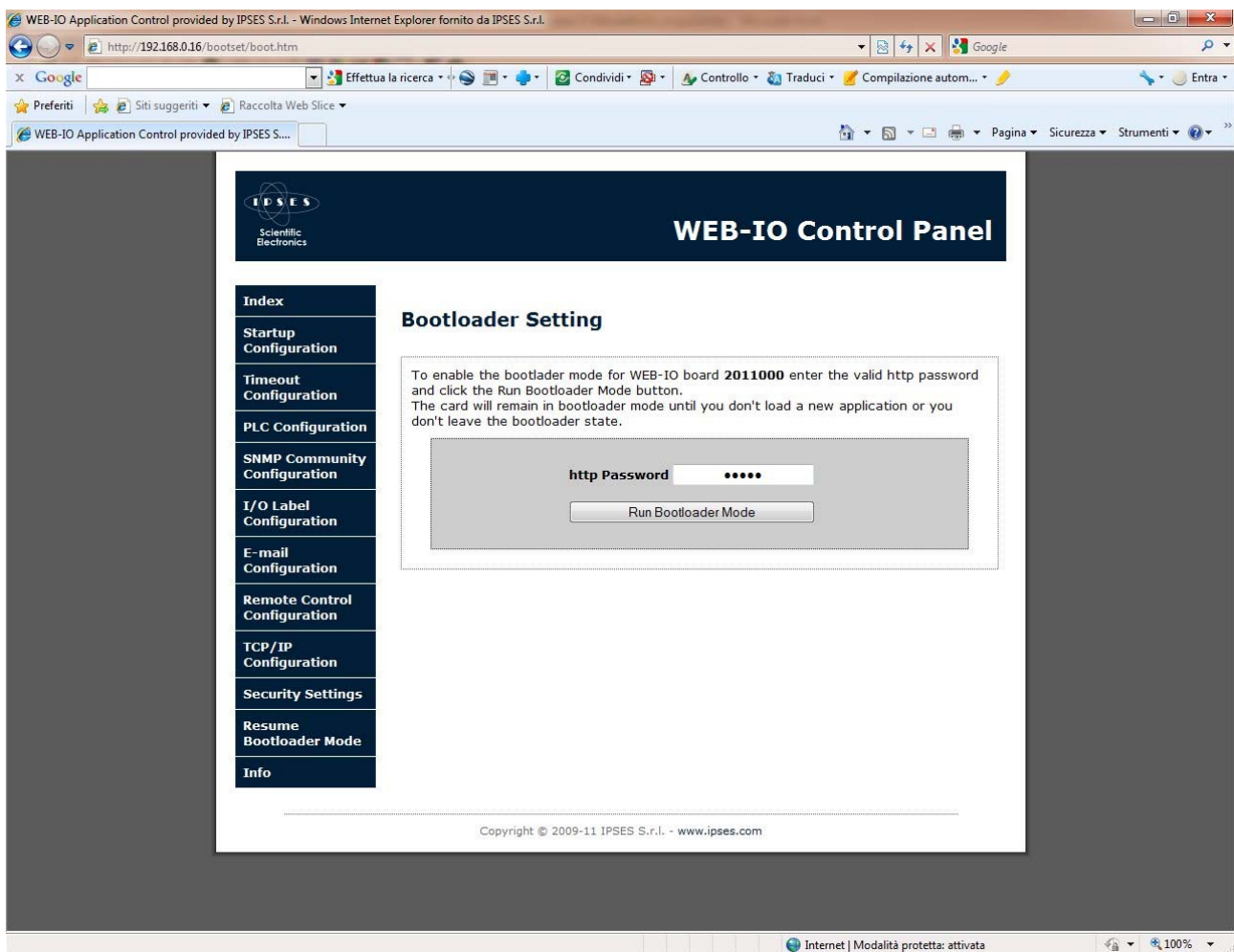
The security Level 0 allows to control the I/O status and functionality of the board from anyone who enters the http pages or who knows the URL commands described in this manual.

To raise the security to Level 1 it is necessary to set the “*Freeze http page commands*” checkbox: the control buttons on the http pages will be disabled, but the URL commands will continue to be processed by the board, as described below in the “I/O MANAGEMENT THROUGH http” paragraph.

To set Level 2 is enough enabling the “*Freeze URL line commands*” checkbox: the *Freeze http page commands* checkbox will be automatically enabled and both buttons on http pages and URL commands will be blocked. However, the reading I/O URL commands will keep to be processed.

Resetting board parameters will configure again the security Level to 0.

The current security settings are shown during the page loading. To save new settings, it is mandatory insert the correct http password before clicking the *Save Security Settings* button.



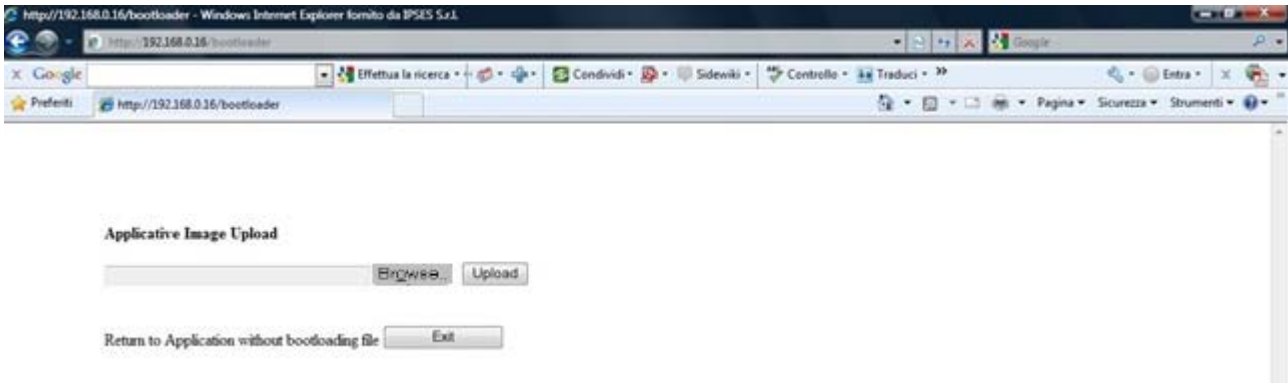
Picture 16: Bootloader mode access page.

The *Bootloader Setting* page, shown in Picture 16, allows to run the bootloader mode on the board for a firmware upgrade. To enable this mode, it is mandatory to insert the correct http password before clicking on the *Run Bootloader Mode* button:

so you will be redirect to the following network address: <http://current-ip/bootloader> (where *current-IP* is the current IP address of the board, i.e. 192.168.0.16).

Picture 17 shows the only page reachable in Bootloader mode. Until the board remain in this status, the SNMP server and the telnet server are unreachable, while all the outputs and *PLC* and *Timeout* function are disabled.

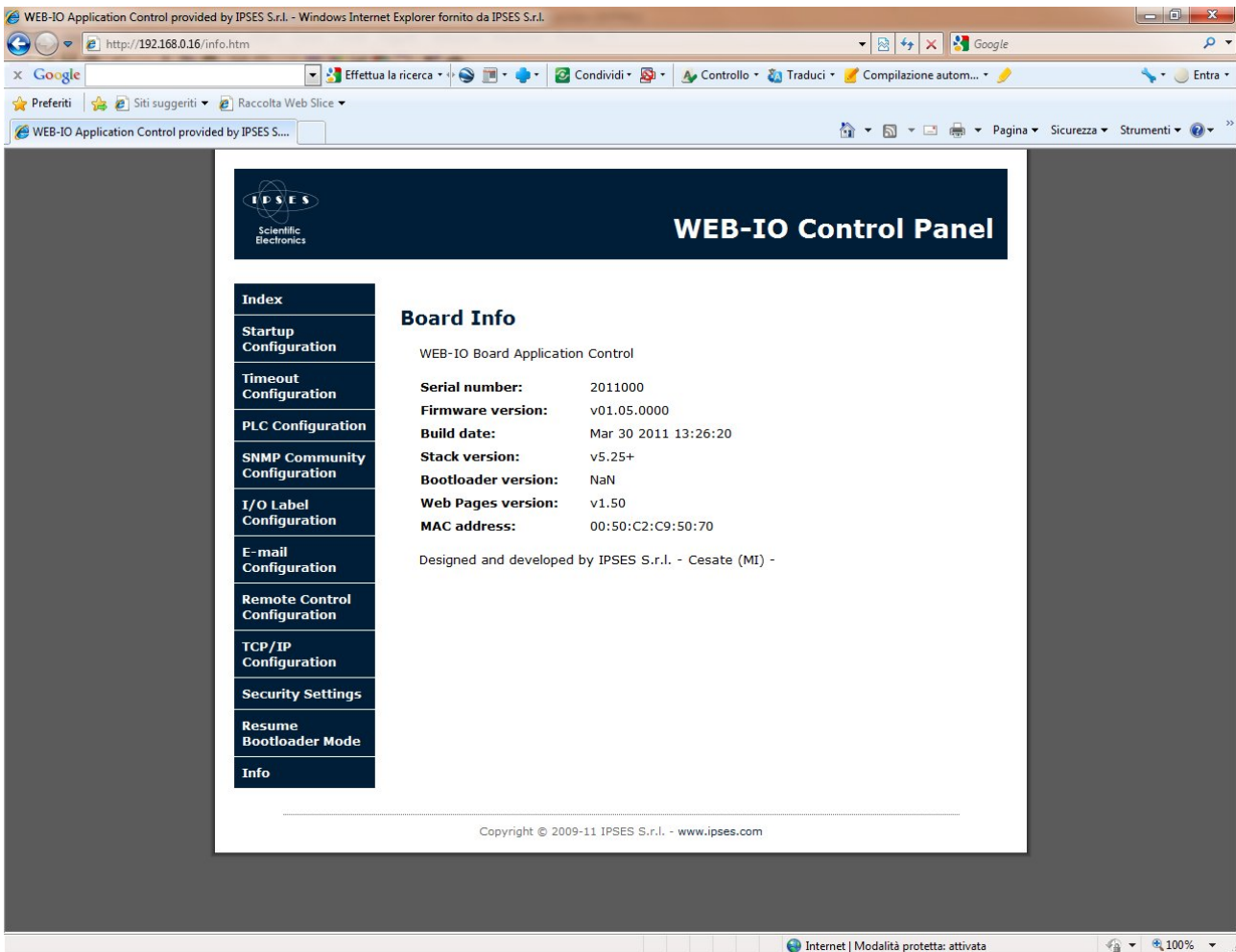
Warning: the board will remain in *bootloader* mode until the installation of a new firmware or the clicking on *Exit* button will be done. The board will not work until the restoration of the normal mode. If none of the two processes listed above will be executed (i.e. the page will be closed using the “x” button on the right upper corner of the window), it will be necessary opening the firmware upgrade page once again by the relevant IP address, proceeding with the installation of a valid firmware or exit the process in the proper way.



Picture 17: Firmware upgrade page.

The *Browse* button allows to select the .bin file with the new firmware, and the *Upload* button starts the installation process. If the upgrade is completed successfully, the board will automatically return to Operative mode and you will be redirect to *index* page.

To exit the Bootloader mode with no upgrade, click the *Exit* button.



Picture 18: Firmware version information page.

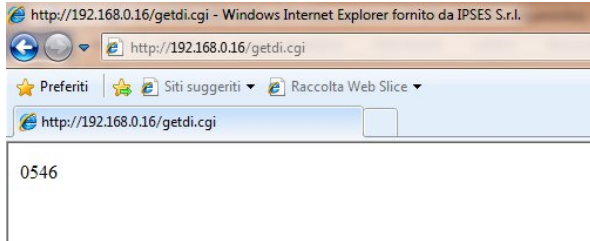
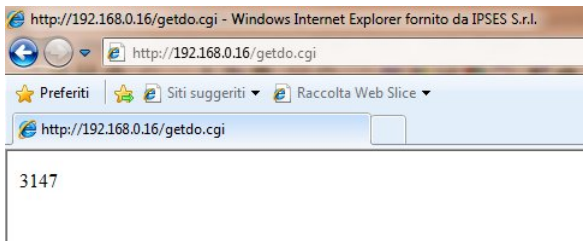
The *Board Info* page, shown in Picture 18, lists the main information concerning firmware version and http page version running on the board.

I/O MANAGEMENT THROUGH http

The WEB-IO board can be interfaced to embedded system where it may be useful to command or to read the I/O status through *http* protocol, without performing a parsing of the previous described web pages.

The I/O reading can be performed by edit in the URL the following address: <http://current-ip/file>, where **current-ip** is the board address (i.e.: 192.168.0.16) and **file** is one among the following ones:

- `getdo.cgi` read the digital output status in hexadecimal format (MSB is Out15 and LSB is Out0).
- `getdi.cgi` read the digital input status in hexadecimal format (MSB is In15 and LSB is In0).



To set a digital output, edit in the URL the following address: <http://current-ip/digbutton.cgi?dbtn=x>, where **x** is referred to the digital output desired (0-15).

This command acts on the selected output by performing a change of its current status: it does not allow to select the logical level (high or low), but only to perform a toggle, unless the output is not tied to a logical level by the PLC function enable.

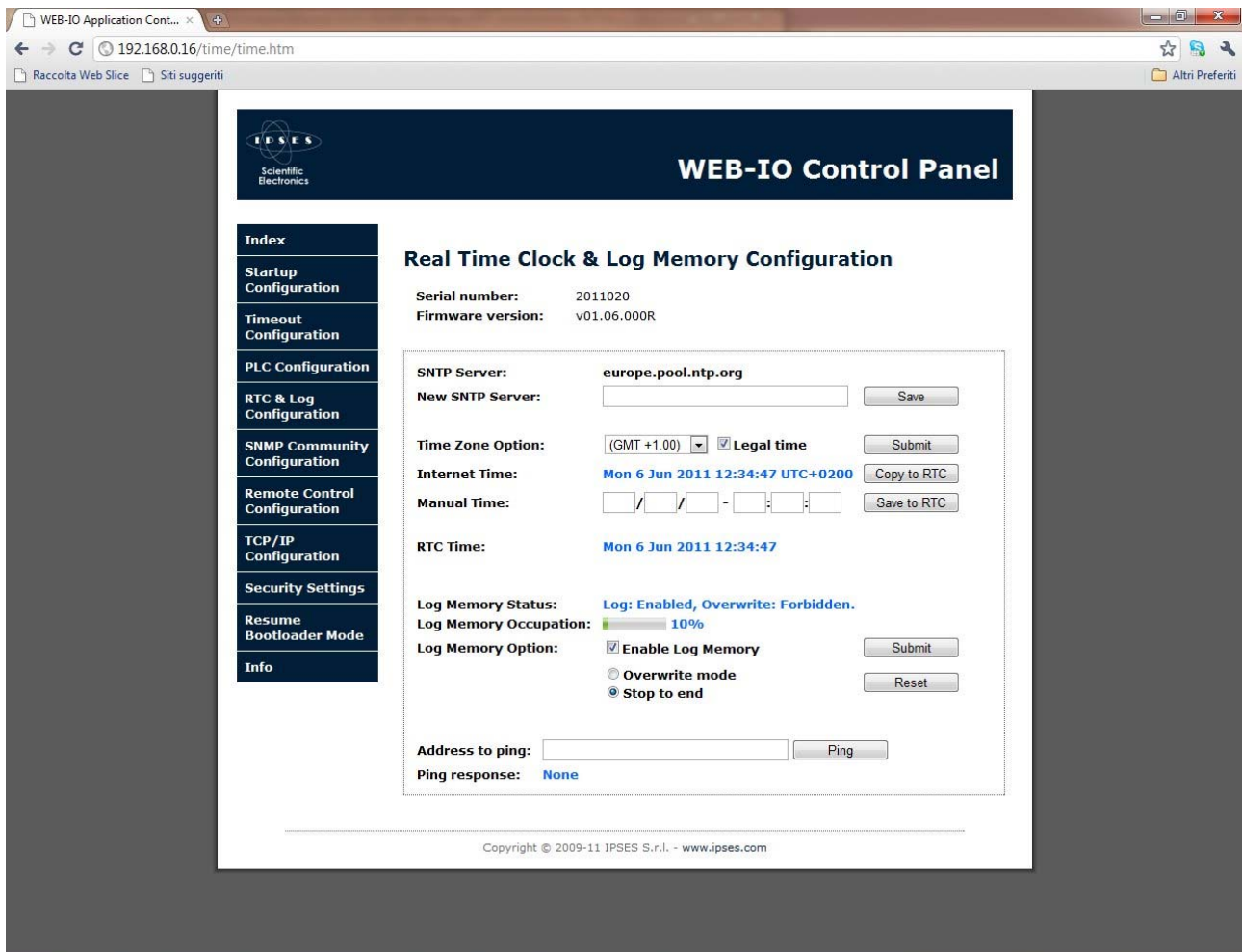
If the security option "*Freeze URL line commands*" is enabled, the command sent to the board will not process.

The http page shown by the board as response to these commands is a blank page: the user must take care to digit correctly the URL addresses and the parameters.

OPTIONAL MODULE RTCLOG

On request, WEB-IO card can be equipped with the RTCLOG optional module. In this case the board firmware does not implement the SMTP client service because the input status change are now saved into the log memory.

Accordingly to the new firmware, the *I/O Label Configuration* and *E-mail Configuration* pages are removed from the web server, while the *RTC & Log Configuration* page is added to allow to manage RTCLOG module.



Picture 19: Real Time Clock and Log Memory configuration page (RTCLOG module).

Picture 19 shows the configuration page of the Real Time Clock and the Log memory available on the optional RTCLOG module.

The upper side of the page is dedicated to the configuration of the parameter necessary to obtain the current date and time from Internet, like the SNTP (Simple Network Transfer Protocol) server address, shown in the *SNTP Server* field. The *Save* button allows to store the new SNTP address inserted in the *New SNTP Server* field.

The *Time Zone Option* allows to manually assign the GMT displacement and to manage the Legal hour condition. The *Submit* button sends these selections to the board that will update these fields and the date shown in the *Internet Time* field.

If the date from the network is not available the “*Date not available*” message will be shown; in this case make sure the internet connection is on and active, the DNS servers addresses are valid and the SNTP server address is valid. To

perform this check you can use the ping function available at the end of the page. When you push the *Ping* button the card try to ping the addresses inserted in the *Address to ping* field.

The *RTC Time* can be assigned in two ways: from the Internet, with the *Copy to RTC* button, or manually (in the format DD/MM/YYYY-HH:MM:SS) with the *Save to RTC* button. If the Internet time is not available the *Copy to RTC* button is disabled; if the external module is not present also the *Save to RTC* button is disabled.

The lower section is dedicated to the Log memory configuration parameters. Log Memory Status shows the enable/disable logging status and the writing mode set on the board. These parameters can be modified in the *Log Memory Option* field and send with the *Submit* button. The *Reset* button erase all the memory content, without changing the current settings. The *Log Memory Occupation* field shows the percentage of memory filling (at the time of this writing not all browsers support the display of the metric bar).

If the external module is disabled the “*External module disabled*” message is shown and the *Submit* and *Reset* buttons are dimmed.

The configuration of the log parameters can be done only with the *http* service, while the *telnet* service allows only to cancel the saved records. The reading of the memory contents can be done with *http* service, as explained in the next paragraph “LOG RECORDS VISUALIZATION THROUGH *http*”, both with *telnet* service.

The Log memory, if enabled, is written at every inputs statuses change. The data stored are: RTC date, inputs statuses and outputs statuses. The memory can store up to 4093 samples.

The memory filling can be managed in two ways. A cyclic filling (Overwrite mode) where the writing cycle restart to write from the initial location after the last location is reached: in this mode the newer datum overwrites the older one and the user must assure itself to reading the data before they will be overwritten. The other mode (*Stop to end mode*) assures that the data will be written until the memory reaches its last location, while the next data will be lost.

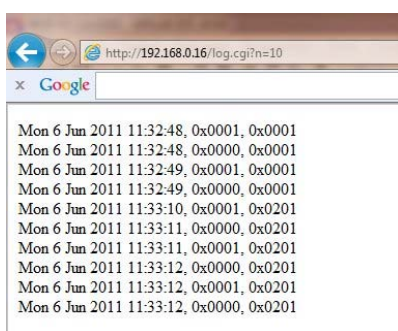
If the communication is lost the current page shows the following error message: “*Connection to WEB-IO board was lost*”.

LOG RECORDS VISUALIZATION THROUGH *http*

The Log records can be read also through *http* protocol.

To facilitate the development of your applications it has been implemented the possibility to read the entire memory contents, or only the last saved records, by edit the following URLs: <http://current-ip/log.cgi> and <http://current-ip/log.cgi?n=x>, where **current-ip** is the board address (i.e.: 192.168.0.16) and **x** is the number of requested records, from the last one.

The next picture shows an example of the answer related to the request of the last 10 records.



Each record is formatted as following:

*data, input, output
*

The input and output status is expressed in the hexadecimal notation, where the I/O 0 is the LSB and the I/O 15 is the MSB.

The terminator character of each record is the html break-line tag: "
".

The time necessary to populate the answer page is proportional to the number of requested records, so, the request of the whole memory content, if it is effectively full, needs some second to be elapsed.

If the memory is empty it will be returned the "*Memory empty!*" string, while if the RTCLOG module is not connected or not recognize it will be returned the "*External module disabled*" string.

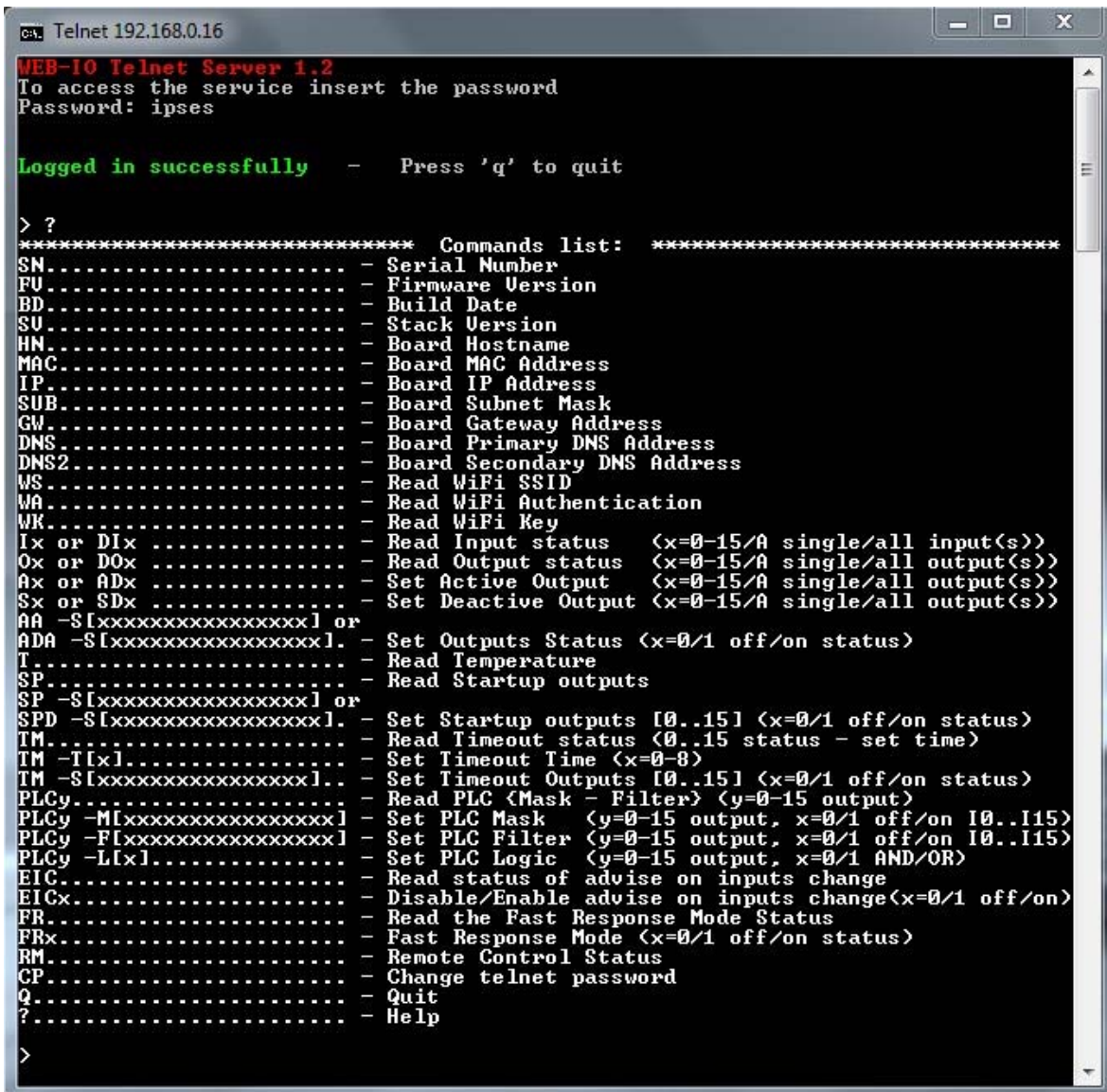
telnet SERVER

To connect to *telnet* server implemented on the board it is enough a telnet client program (i.e. the client installed in your operative system or the *hyperterminal*).

The configuration parameters of the client must be:

- telnet communication port: 23;
- echo: on (if you want to see typed characters);
- termination characters: <CR LF> (\r\n).

Picture 20 shows the initial snapshot: to access the server, insert the *telnet* password, then press "Enter".



```

Ca: Telnet 192.168.0.16
WEB-IO Telnet Server 1.2
To access the service insert the password
Password: ipses

Logged in successfully - Press 'q' to quit

> ?
***** Commands list: *****
SN..... - Serial Number
FU..... - Firmware Version
BD..... - Build Date
SU..... - Stack Version
HN..... - Board Hostname
MAC..... - Board MAC Address
IP..... - Board IP Address
SUB..... - Board Subnet Mask
GW..... - Board Gateway Address
DNS..... - Board Primary DNS Address
DNS2.... - Board Secondary DNS Address
WS..... - Read WiFi SSID
WA..... - Read WiFi Authentication
WK..... - Read WiFi Key
Ix or DIx ..... - Read Input status (x=0-15/A single/all input(s))
Ox or DOx ..... - Read Output status (x=0-15/A single/all output(s))
Ax or ADx ..... - Set Active Output (x=0-15/A single/all output(s))
Sx or SDx ..... - Set Deactive Output (x=0-15/A single/all output(s))
AA -S[xxxxxxxxxxxxxxxx] or
ADA -S[xxxxxxxxxxxxxxxx] - Set Outputs Status (x=0/1 off/on status)
T..... - Read Temperature
SP..... - Read Startup outputs
SP -S[xxxxxxxxxxxxxxxx] or
SPD -S[xxxxxxxxxxxxxxxx] - Set Startup outputs [0..15] (x=0/1 off/on status)
TM..... - Read Timeout status (0..15 status - set time)
TM -T[x]..... - Set Timeout Time (x=0-8)
TM -S[xxxxxxxxxxxxxxxx].. - Set Timeout Outputs [0..15] (x=0/1 off/on status)
PLCy..... - Read PLC (Mask - Filter) (y=0-15 output)
PLCy -M[xxxxxxxxxxxxxxxx] - Set PLC Mask (y=0-15 output, x=0/1 off/on I0..I15)
PLCy -F[xxxxxxxxxxxxxxxx] - Set PLC Filter (y=0-15 output, x=0/1 off/on I0..I15)
PLCy -L[x]..... - Set PLC Logic (y=0-15 output, x=0/1 AND/OR)
EIC..... - Read status of advise on inputs change
EICx..... - Disable/Enable advise on inputs change(x=0/1 off/on)
FR..... - Read the Fast Response Mode Status
FRx..... - Fast Response Mode (x=0/1 off/on status)
RM..... - Remote Control Status
CP..... - Change telnet password
Q..... - Quit
?..... - Help

>

```

Picture 20: *telnet* server access page and help request.

This service allows to read I/O status, to read card parameters, to manage outputs and Log memory (only with firmware that support RTCLOG module). All commands are case-insensitive.

Commands list is displayed below:

Command	Description	Answer type
Q	Closes telnet connection	
SN	Requests board serial number	1
FV	Requests firmware version	1
BD	Requests firmware build date	1
SV	Requests TCP/IP stack version	1
HN	Requests board hostname	1
MAC	Requests board MAC address	1
IP	Requests board IP address	1
SUB	Requests board Subnet mask	1
GW	Requests board Gateway address	1
DNS	Requests board Primary DNS server address	1
DNS2	Requests board Secondary DNS server address	1
Ix or DIx	Requests input status (x = 0-15 / A → all)	2
Ox or DOx	Requests output status (x = 0-15 / A → all)	2
Ax or ADx	Activates related output (x = 0-15 / A → all)	3
Sx or SDx	Disables related output (x = 0-15 / A → all)	3
AA -S[xxxxxxxxxxxxxxxx] or ADA -S[xxxxxxxxxxxxxxxx]	Sets the status of each output, from Out0 to Out15	3
T	Requests measured temperature	1
SP	Requests all startup outputs status	2
SP -S[xxxxxxxxxxxxxxxx] or SPD -S[xxxxxxxxxxxxxxxx]	Sets startup status (x = 0/1 – Off/On) of each output, from Out0 to Out15	3
TM	Requests timeout settings (outputs status Out0..Out15 – timeout time [0-8])	1
TM -T[x]	Sets timeout time (x = 0-8)	3
TM -S[xxxxxxxxxxxxxxxx]	Sets timeout status (x = 0/1 – Off/On) of each output, from Out0 to Out15	3
PLCy	Requests mask and filter settings (M0..M15 – F0..F15 related to In0..In15 inputs) for the y output (y = 0-15)	1
PLCy -M[xxxxxxxxxxxxxxxx]	Sets the mask status (x = 0/1 – Off/On) of each input, from In0 to In15, for the y output (y = 0-15)	3
PLCy -F[xxxxxxxxxxxxxxxx]	Sets the filter status (x = 0/1 – Off/On) of each input, from In0 to In15, for the y output (y = 0-15)	3
PLCy -L[x]	Sets the Boolean logic function (x = 0/1 – AND/OR) for the y output (y = 0-15)	3
EIC	Requests the operating status of the notification of change of inputs	4
EICx	Enable/Disable the notification function of change of inputs (x= 0/1 – Off/On)	3
FR	Requests Fast Response status (0/1 = Off/On)	4
FRx	Set Fast Response status (x=0/1 – Off/On)	3
RM	Request the Remote Control Service	2

MS	Requests the Enable Status of Log Memory	
MP	Requests the logging memory parameters (memory size, current location, overwrite status)	
M?	Reads the data memory content	
MR	Reset the data memory content	
CP	Enables telnet service password	
?	Command help	

Note: the commands related to Log memory are implemented only in firmware version supporting the RTCLOG module.

The change of the password in telnet does not perform a reboot of the board or the automatic disconnection from the current session, on the contrary to what happens in the analogous http service. Obviously, next telnet access to board, here included the use of demo software, must be authorized by the new password.

The typing of an excessive number of chars (over 29) saturates the receiving buffer of the card and consequently the session will be lost.

The following table lists of answers related to the edited command:

Answer type	Description
1	The answer is preceded by a 18 chars length descriptive string. For example the SN command generates the following answer: "Serial number: 2010000".
2	The data answer is preceded by a descriptive string with variable length, related to the typed command.
3	The answer to these I/O setting commands is: "\x1b[34mdone \x1b[0;1m".
4	The answer is made by a single char: 0 = Off, 1 = On.

The next table encode the timeout time parameter used in TM and TM -T[x] commands:

Parameter	Value
0	No timeout
1	5 seconds
2	10 seconds
3	30 seconds
4	1 minute
5	5 minutes
6	10 minutes
7	30 minutes
8	1 hour

DEVELOPMENT OF CONTROL APPLICATIONS WITH *telnet* PROTOCOL

It is possible to develop a control application for the WEB-IO board based on telnet Server: the user program should be able to manage the strings generated from the server.

The following are the strings used in the program, with a brief description of them.

Server telnet access string.

```
"\x1b[2J\x1b[31m\x1b[1mWEB-IO Telnet Server 1.2\x1b[0m\r\nTo access the service insert the password\r\nPassword: "
```

Answer string to incorrect password: the telnet socket will be closed.

```
"\r\nAccess denied\r\n\r\n"
```

Answer string to correct password: the command prompt will be shown.

```
"\r\n\r\n\x1b[1;32mLogged in successfully\x1b[0m - Press 'q' to quit\r\n\r\n"
```

Command prompt: it is shown after each command executed, except CP command.

```
"\r\n> "
```

Answer string to each invalid command or request

```
"\x1b[33merror\x1b[0;1m"
```

UTILITY DESCRIPTION

The EICx (Advise on Input Change) command allows to enable or disable the printing of the status of all inputs, in hexadecimal format, every time there is a change of at almost one input.

The command is disabled by default at every server access.

The FRx (Fast Response) command allows to enable or disable the printing of the descriptive strings. This utility is useful to write codes in which the program focuses his resource only to process the data received in a synthetic form, without parsing all the strings.

The command is disabled by default at every server access.

The CP (Change Password) command is made by three phases: in the first one, it is requested to insert the new password:

```
"\r\nEnter new password: "
```

Next one it is requested to confirm the new password:

```
"\r\nConfirm new password: "
```

Now, if the password match is valid, the answer string will be:

```
"\r\n\r\nPassword changed successfully!\r\n"
```

Otherwise it will be:

```
"\r\n\r\nPassword change fails!\r\n"
```

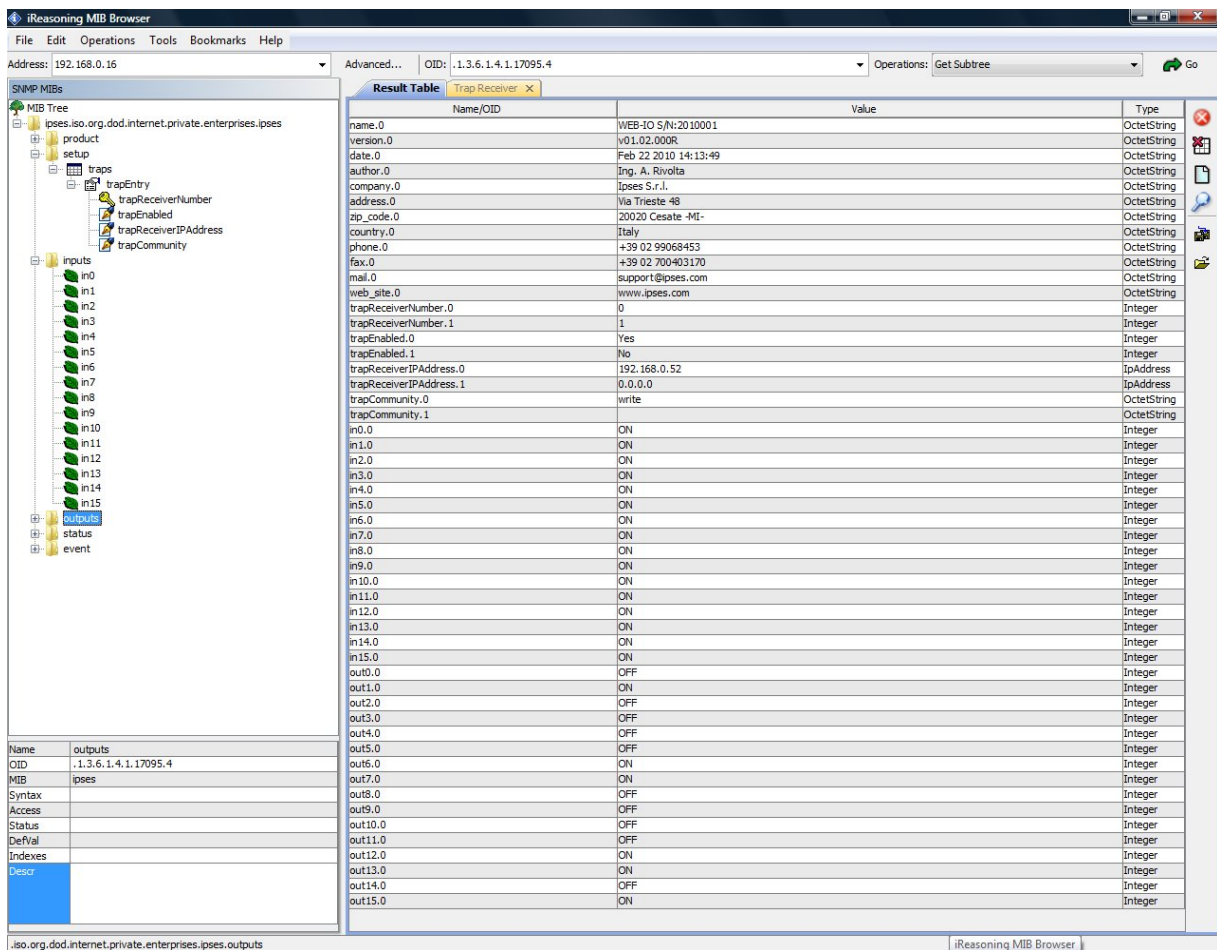
The change of the password in telnet does not perform a reboot of the board or the automatic disconnection from the current session, on the contrary to what happens in the analogous http service. Obviously, next telnet access to board, here included the use of demo software, must be authorized by the new password.

SNMP SERVER

To connect the SNMP server implemented on the board user can use any MIB browser program, like *iReasoning MIB Browser*².

Once the communication with the board is on, it is necessary to be sure the browser is correctly configured according the following check list.

- The MIB Tree must include the .mib file provided with the CD. To load it, use the command "File → Load MIBs" and search through the folders, selecting the file WEB-IO.mib.
- The Agent must be configured properly with communities parameters. To verify it, use the command "Tools → Options" and select the tab Agents. The *Add button* allows to configure a new Agent, setting IP board address, Port (161), Version (2), Read and Write Communities.

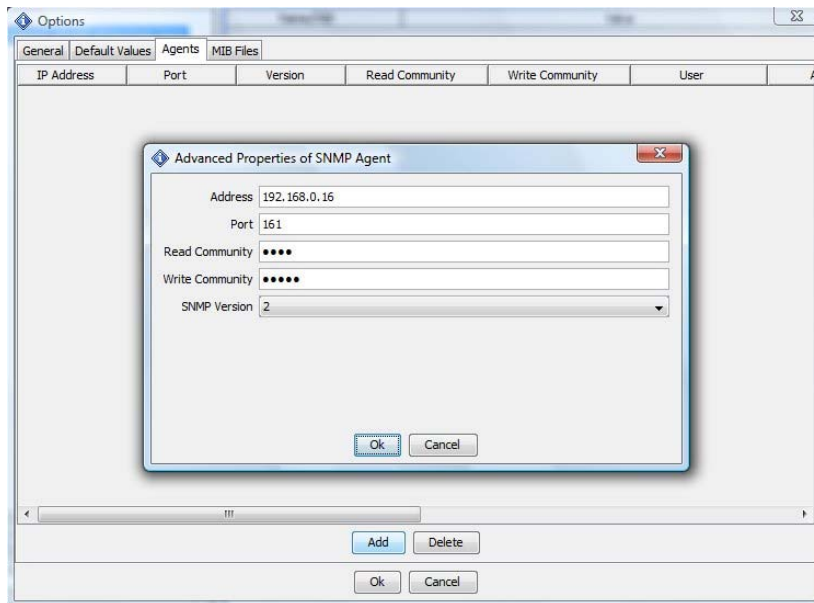


The screenshot shows the iReasoning MIB Browser interface. On the left, the MIB Tree displays the hierarchy for 'ipsec.iso.org.dod.internet.private.enterprises.ipsec'. The 'Trap Receiver' MIB is selected, showing its structure with 'trapEntry' and 'trapCommunity' nodes. The main window displays the 'Result Table' for the 'Trap Receiver' MIB, showing a list of OID values and their corresponding types.

Name/OID	Value	Type
name.0	WEB-IO S/N:2010001	OctetString
version.0	v01.02.000R	OctetString
date.0	Feb 22 2010 14:13:49	OctetString
author.0	Ing. A. Rivolta	OctetString
company.0	Ipsec S.r.l.	OctetString
address.0	Via Trieste 48	OctetString
zip_code.0	20020 Cesate -MI-	OctetString
country.0	Italy	OctetString
phone.0	+39 02 99068453	OctetString
fax.0	+39 02 700403170	OctetString
mail.0	support@ipsec.com	OctetString
web_site.0	www.ipsec.com	OctetString
trapReceiverNumber.0	0	Integer
trapReceiverNumber.1	1	Integer
trapEnabled.0	Yes	Integer
trapEnabled.1	No	Integer
trapReceiverIPAddress.0	192.168.0.52	IpAddress
trapReceiverIPAddress.1	0.0.0.0	IpAddress
trapCommunity.0	write	OctetString
trapCommunity.1		OctetString
in0.0	ON	Integer
in1.0	ON	Integer
in2.0	ON	Integer
in3.0	ON	Integer
in4.0	ON	Integer
in5.0	ON	Integer
in6.0	ON	Integer
in7.0	ON	Integer
in8.0	ON	Integer
in9.0	ON	Integer
in10.0	ON	Integer
in11.0	ON	Integer
in12.0	ON	Integer
in13.0	ON	Integer
in14.0	ON	Integer
in15.0	ON	Integer
out0.0	OFF	Integer
out1.0	ON	Integer
out2.0	OFF	Integer
out3.0	OFF	Integer
out4.0	OFF	Integer
out5.0	OFF	Integer
out6.0	ON	Integer
out7.0	ON	Integer
out8.0	OFF	Integer
out9.0	OFF	Integer
out10.0	OFF	Integer
out11.0	OFF	Integer
out12.0	ON	Integer
out13.0	ON	Integer
out14.0	OFF	Integer
out15.0	ON	Integer

Picture 21: MIB browser display

² Downloadable from www.ireasoning.com web site



Picture 22: MIB browser and SNMP Agent configuration.

Picture 22 shows the MIB browser and the configuration of the related SNMP Agent parameters.

The MIB Tree has six branches, each of them has several leafs:

- *product*, where to read information about the board
- *setup*, where to set the parameters for two different traps
- *inputs*, where to read input status
- *outputs*, where to read or set the output status
- *status*, where to read the PLC and Timeout function status (On/Off) and the measured temperature (if available)
- *events*, which contains the variable associated to the Trap's event, and it can be read or written.

Using SNMP server it is not possible to configure the PLC and Timeout functions.

The *Operation* selector specifies the request to be sent to the server. The answers to reading requests are shown in the Result Table; instead, to set a parameter, it is mandatory to insert the value, according to the specified kind, in the relevant form of the pop-up window.

For further information about commands and functions, consult your browser helper.

TRAP EVENTS

The SNMP server implemented on WEB-IO board can generate two separate Trap events, both of them associated to a change of inputs status. Each event can be configured independently. The minimum gap between two trap events is 10 seconds.

The Traps generated are compliant to v2c protocol specification and the information is stored in a sequence of two 16 bit format varbinds: the first one encodes the input status (In0 – In15), the second one encodes the output status (Out0 – Out15).

The parameters to configure, for each event, are:

- trapEnable: 0/1 respectively to disable/enable the event notification.
- trapReceiverIPAddress: IP address of the receiver machine (i.e. the IP address of your PC).
- trapCommunity: a valid community name to receive the event notification.

By default, the parameters of the Trap events are reset at every rebooting: to avoid this condition, set the *save_option* variable in the *setup* path before configuring the parameters values. If the *save_option* variable is deactivated at the startup, the parameters are reset.

To see in your mib browser the list of the generated events, is necessary to open the *Trap Receiver* window with the “Tools → Trap Receiver” command.

PROBLEMS RESOLUTION:

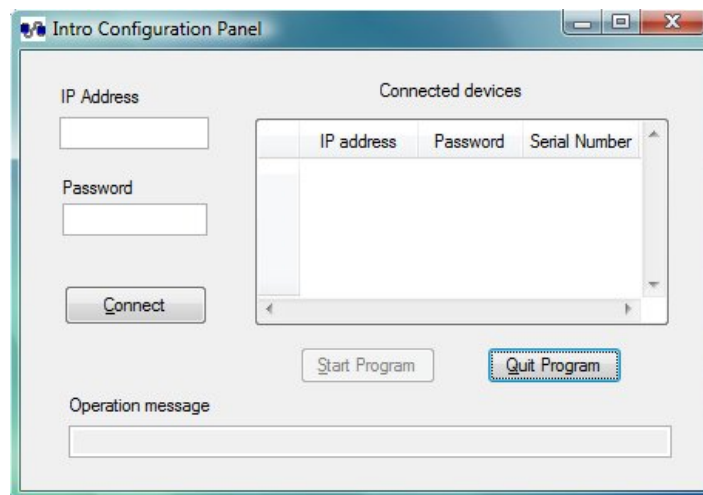
Below verification procedure steps to investigate board malfunctions are listed. If the problem is not resolved, contact the technical support of IPSES S.r.l. sending the Engineering Problem Report included in this manual or downloadable from IPSES website at the following address http://www.ipses.com/PDF/IPSES-engineering_problem_report.pdf

- Verify the correct power supply and operation of the board (see status LEDs).
- Verify the correct connection of the network cable both on board and LAN side (network card, switch ...) and verify if the board is visible from the network.
- Verify the compatibility of board addresses (IP, subnet, gateway) in the operative network. If there is no compatibility, ensure to configure them properly.
- Try to ping the IP address of the board.
- Make sure the IP address in the URL field is correct (*http* service).
- Verify there are no more than 3 simultaneous connection opened on the same board (*http* service).
- Make sure the password inserted in the TCP/IP Configuration page is correct (*http* service).
- Make sure the *telnet* communication port is number 23 (*telnet* service).
- Make sure the *telnet* access password is correct: it is case sensitive (*telnet* service).
- Verify there is no telnet communication already active on the board, via telnet client or demo software (*telnet* service).
- Verify the DNS server addresses.
- Verify the address entered with the ping function (*http* service).
- Check the RTCLOG module is properly connected (the module must be inserted or removed only when the WEB-IO card is not powered on).
- Check the MIB browser is set properly through the .mib correct file loading and communities settings (SNMP service).

DEMO SOFTWARE

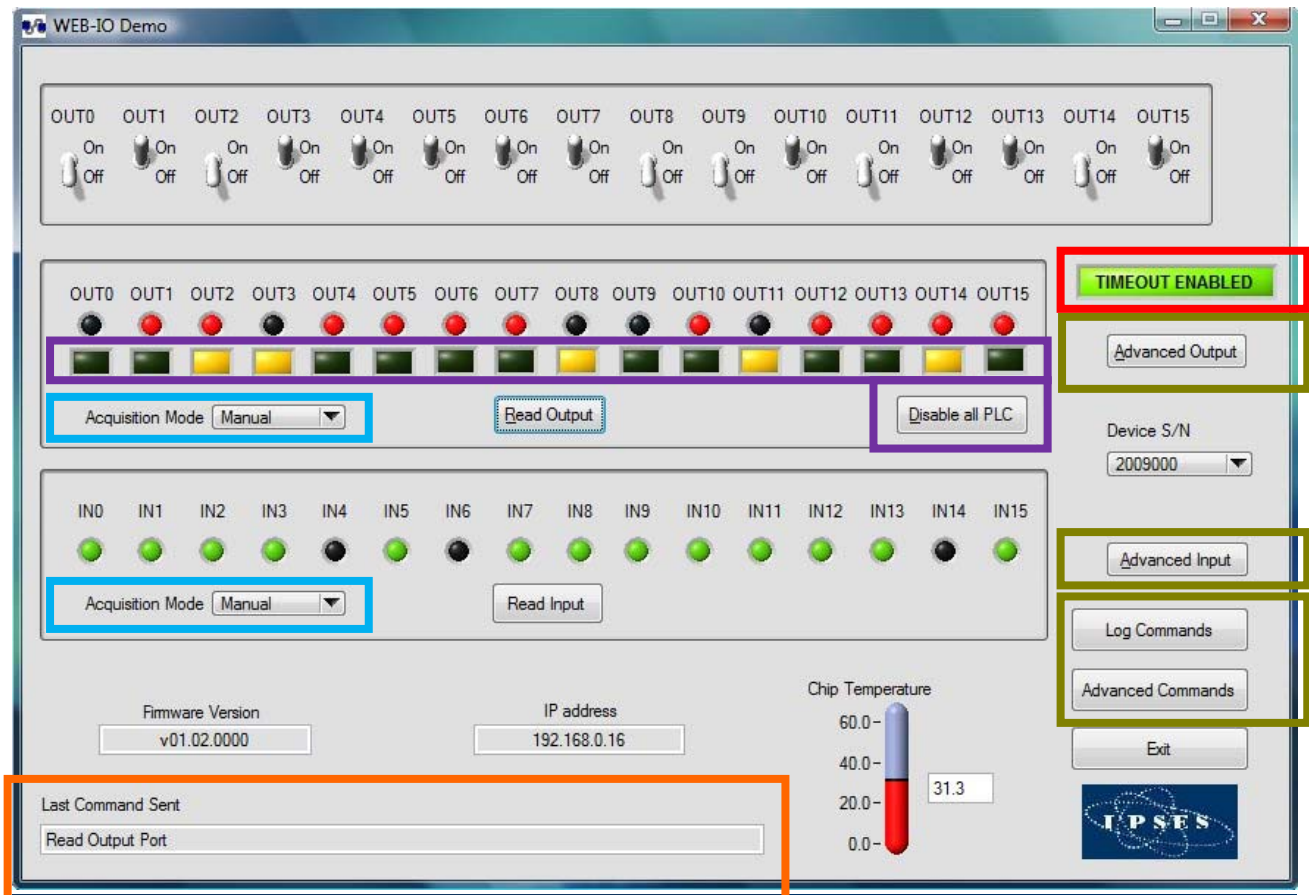
A CD with a demo software is provided with the card. This demo software for Windows O.S., based on *telnet* service, allows to manage the main functions of WEB-IO. To use this software, it is necessary a telnet communication is not already opened on the card, while a *http* communication service can exist simultaneously with. This software allows to manage up to 100 WEB-IO devices simultaneously connected to an Ethernet network.

At the software start-up, the program shows a windows (Picture 23) where it is possible to initialize the connection of the devices managed through the software. To open the connection with a card, insert its *IP address* and its *telnet Password* in the relevant fields, then click on the *Connect* button. After few seconds, if the connection is successfully opened, the *IP address*, *password* and *serial number* parameters of the board will be shown on *Connected devices* table; otherwise an error message will be shown in the *Operation message* indicator. The *Start Program* button will be enabled only when the connected device list will contain almost one connected device. It is no possible to add other devices once the initialization phase is terminated: to do this, close the program and restart it repeating the initialization steps. The *Quit Program* button allows to close the software without opening the main window.



Picture 23: Initialization connection panel of the demo software.

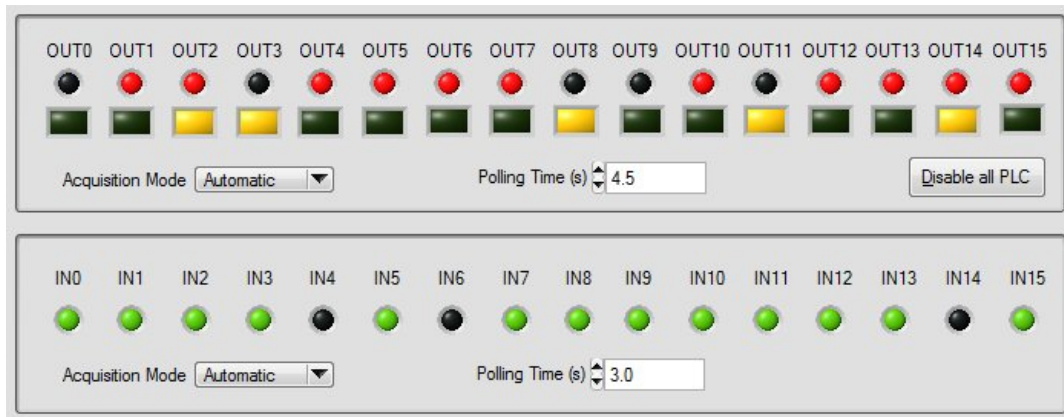
Picture 24a shows a snapshot of the main window of the software. To enable the control of one of the initialized cards it necessary to select its *Serial Number* from the *Device S/N* ring menu. The selection of a new board allows to automatically update the inputs and outputs status and to update *Firmware Version* and *IP Address* fields. The temperature indicator is updated only if the card is equipped with the relevant sensor; otherwise the indicator will be disabled.



Picture 24a: Main windows of the demo software.

The field *Last Command Sent* (surrounded in orange in Picture 24a) shows the last executed operation. The selectors in the upper part directly manage the sixteen outputs in real time, while the *Read Output* button update the software output LEDs exactly as in the card (the software colour, red, is the same of the card).

Both logic inputs and outputs status can be achieved in two ways, thanks to the selectors ring menu (surrounded in blue in Picture 24a): the manual mode performs an asynchronous acquisition when you push respectively the *Read Input* button or *Read Output* button, while the automatic mode performs a continuous polling of the inputs and/or outputs status. The polling rate is customizable by the *Polling Time* controls (showed in Picture 24b): these fields accept values between 1.5s and 10s, with a step of 0.5s. In both cases, the software LEDs are updated at each acquisition: the one referred to the inputs status are green, while the ones referred to the outputs status are red.

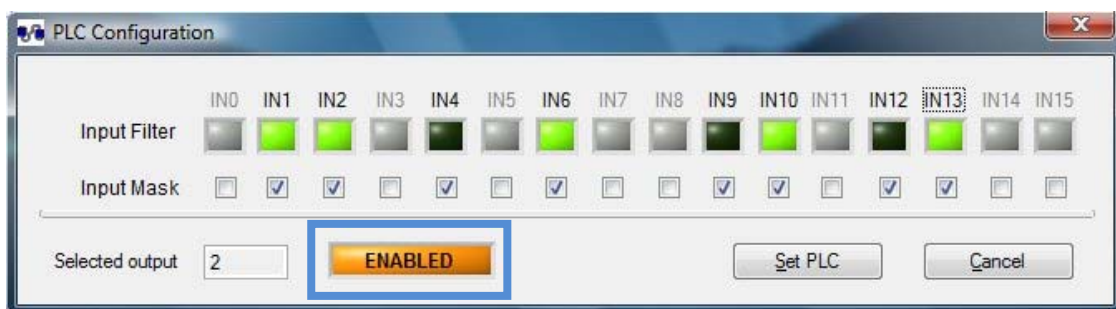


Picture 24b: Automatic acquisition mode of the inputs and the outputs.

The objects in the purple section (see Picture 24a) allow to configure masks and filters for PLC functions. Clicking on the relevant square LED of an output a pop-up window will appear, as shown in Picture 25.

For each output the square LED is on only when almost an input is masked, so the PLC function is enabled, otherwise it is off and the PLC function is disabled.

The *Disable all PLC* button resets and stores all masks for each output, without modifying any filter.



Picture 25: mask and filter PLC configuration pop-up window.

When the pop-up window is opening, the mask and filter configuration currently stored for the selected output is shown. If an input mask is enabled, it is possible to modify its filter status too, otherwise the last one is dimmed. To modify a filter status, click on the relevant square LED.

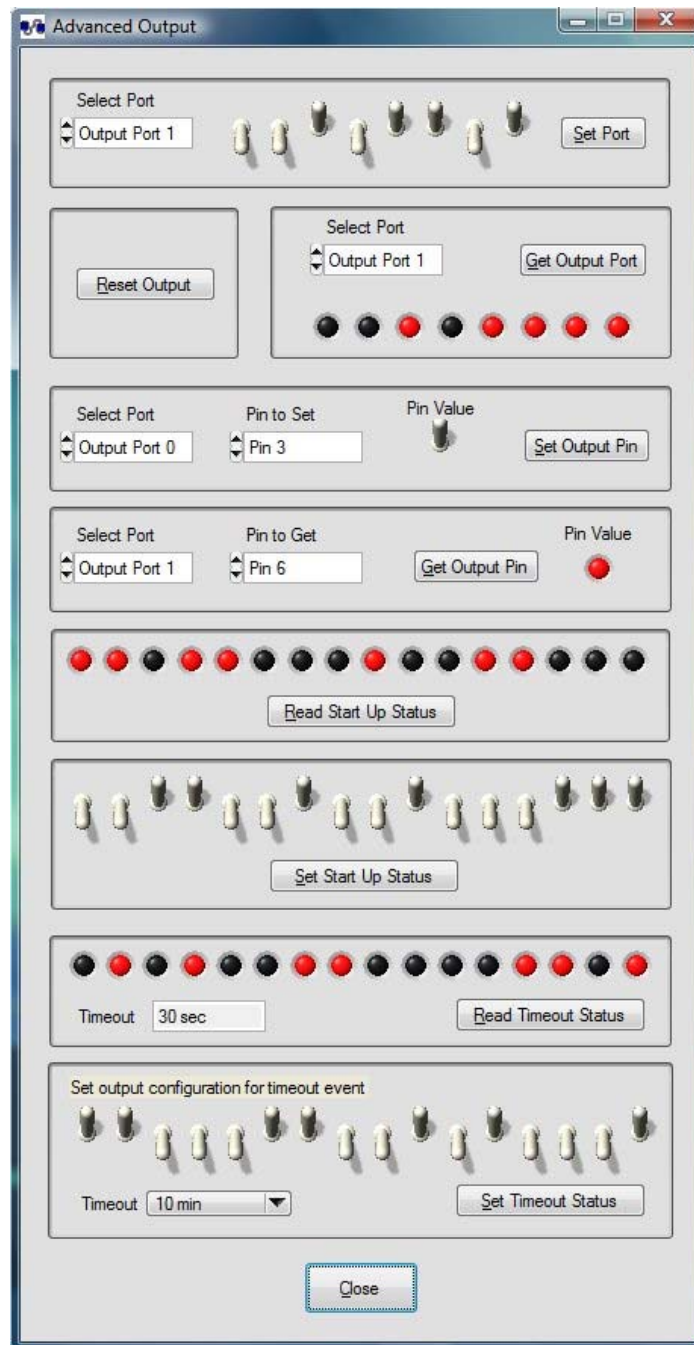
If all inputs are not masked, the enable/disabled square LED, surrounded in blue in Picture 25, is off and the "DISABLED" message appears.

The *Set PLC* button allows to store the configuration settings, while the *Cancel* button closes the pop-up window without saving them.

The square LED surrounded in red in Picture 24a shows the status of the Timeout function. If it is disabled, the LED is off and the TIMEOUT DISABLED message appears.

Three buttons on the right (surrounded in green in Picture 24a) allow to open three windows: the first one for the outputs (*Advanced Output*), the second one for the inputs (*Advanced Input*) and the last one for the read and write commands in the non-volatile memory (*Advanced Commands*).

The *Advanced Output* window (see Picture 26) allows the typical operations you can perform on the outputs of the device.



Picture 26: Advanced Output window.

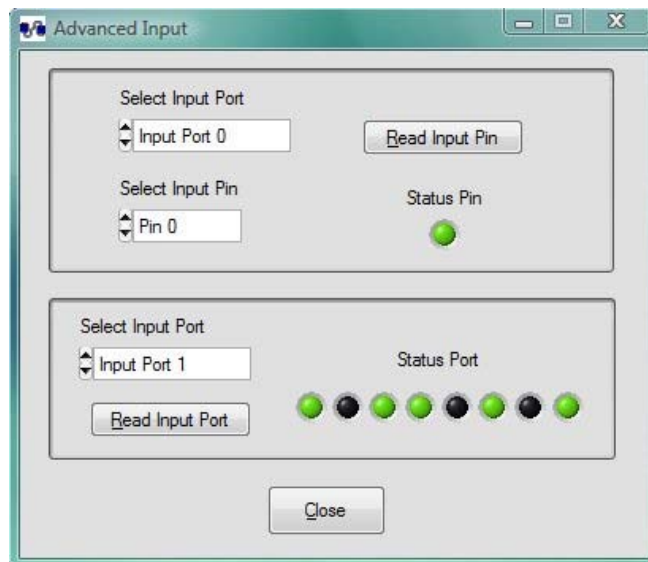
The output commands are listed below:

- Activation of each output for both ports
- Reset of the outputs (all outputs are switched off)
- Reading of the status of each output for each port
- Command and reading of a single output
- Reading of the start-up configuration
- Setting of the start-up configuration

- Reading of the Timeout function configuration (outputs status and timeout time)
- Settings of the Timeout function configuration (outputs status and timeout time)

Advanced Input window (see Picture 27) allows the typical operations you can performed on the inputs of the device. The input commands are listed below:

- Reading of the status of each input for each port
- Reading of the status of a single input

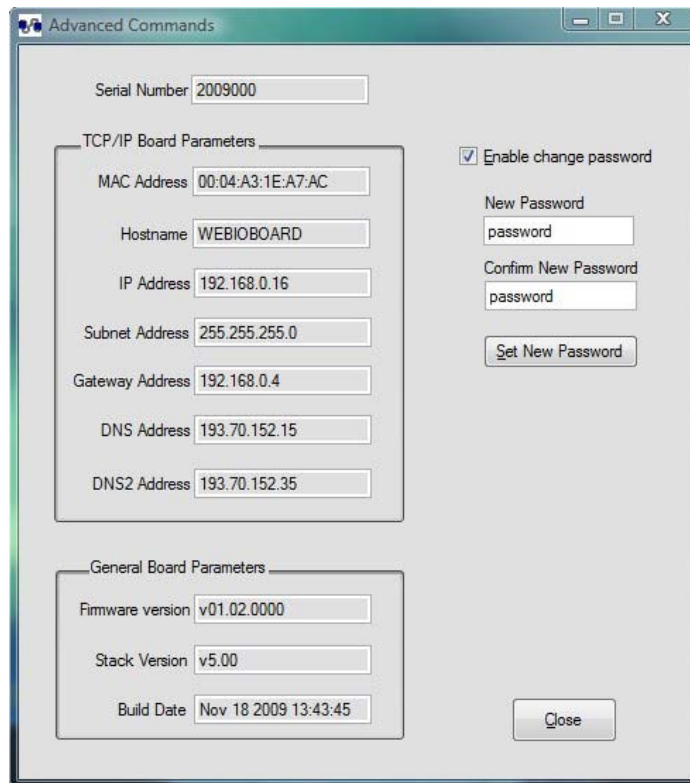


Picture 27: Advanced Input window.

The *Advanced Commands* window (see Picture 28) displays all TCP/IP and firmware configuration parameters of the current board and allows to change the *telnet* password.

The new *telnet* password must be inserted in the *New Password* field and replied in *Confirm New Password* field: it could be any alphanumeric strings with a valid length between one and eight characters.

The *Enable Change Password* checkbox enables the *Set New Password* button. The result of the modifying command will be shown in the *Last Command Sent* field in the lower part of the main panel, while if an error is generated by the password validity check operation, the error message will be popped up.



Advanced Commands

Serial Number: 2009000

TCP/IP Board Parameters

MAC Address: 00:04:A3:1E:A7:AC

Hostname: WEBIOBOARD

IP Address: 192.168.0.16

Subnet Address: 255.255.255.0

Gateway Address: 192.168.0.4

DNS Address: 193.70.152.15

DNS2 Address: 193.70.152.35

☒ Enable change password

New Password: password

Confirm New Password: password

Set New Password

General Board Parameters

Firmware version: v01.02.0000

Stack Version: v5.00

Build Date: Nov 18 2009 13:43:45

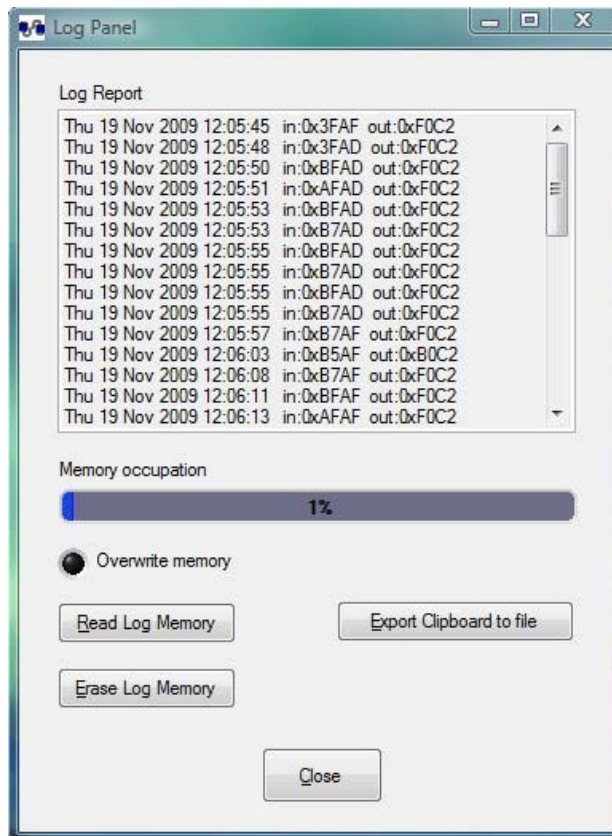
Close

Picture 28: Advanced Command window.

The *Log Panel*/window, shown in Picture 29, which can be opened by the *Log Commands* button, allows to read and erase the Log memory. A progress bar indicates the current memory occupation, while the *Overwrite memory* LED turns on only when the memory is full and the new data overwrite the older ones.

The *Read Log Memory* button allows to read the memory content shown in the *Log Report*; it is possible to export the content of this field in a text file (.txt) with the *Export Clipboard to file* button.

The *Erase Log Memory* button erases all the memory content.



Picture 29: Log Panel window.

TCP/IP ADDRESS CONFIGURATOR SOFTWARE



WEB-IO Board Address Configurator, provided with the card, is a software which allows to configure remotely TCP/IP addresses for WEB family IO control units (WEB-IO, WEB-IOBOX, WEB-ADIO, WEB-IO-WiFi, WEB-ADIO-WiFi).

Only for WiFi models it is also possible to configure the wireless board parameters.

The configuration of the device is achieved through Ethernet interface, or, only for WiFi models, also with the wireless interface. In the last case it is necessary that the card can connect itself to the Access Point, i.e. the SSID and authentication parameters must be correct.

To work properly, only one card per time must be set in address configuration mode, even if you have more than one board of the WEB family connected.

WEB-IO Board Address Configurator software is able to communicate with every IP address, excluded the reserved broadcast address (255.255.255.255). That means it is possible to configure also cards with out-of-net IP addresses.

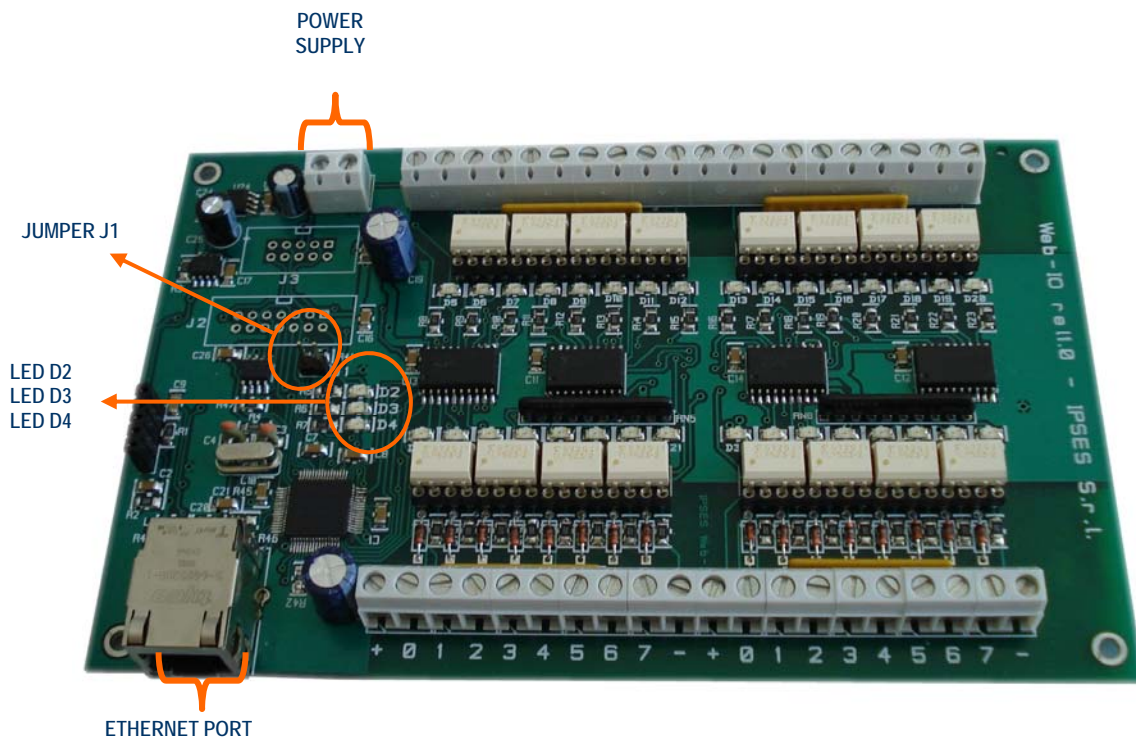
ADDRESS CONFIGURATION MODE

To enable the hardware *address configuration* mode, follow the procedure listed below:

- with the WEB-IO board already powered on, insert jumper J1 (see picture below).
- perform the desired software configuration.
- at the end of the configuration, remove jumper J1.

Do not disconnect the power supply during the address configuration procedure.

A supply reset, with the jumper J1 inserted, will restore the factory parameters.



Picture 30: WEB-IO card

ADDRESS CONFIGURATOR CONTROL PANEL

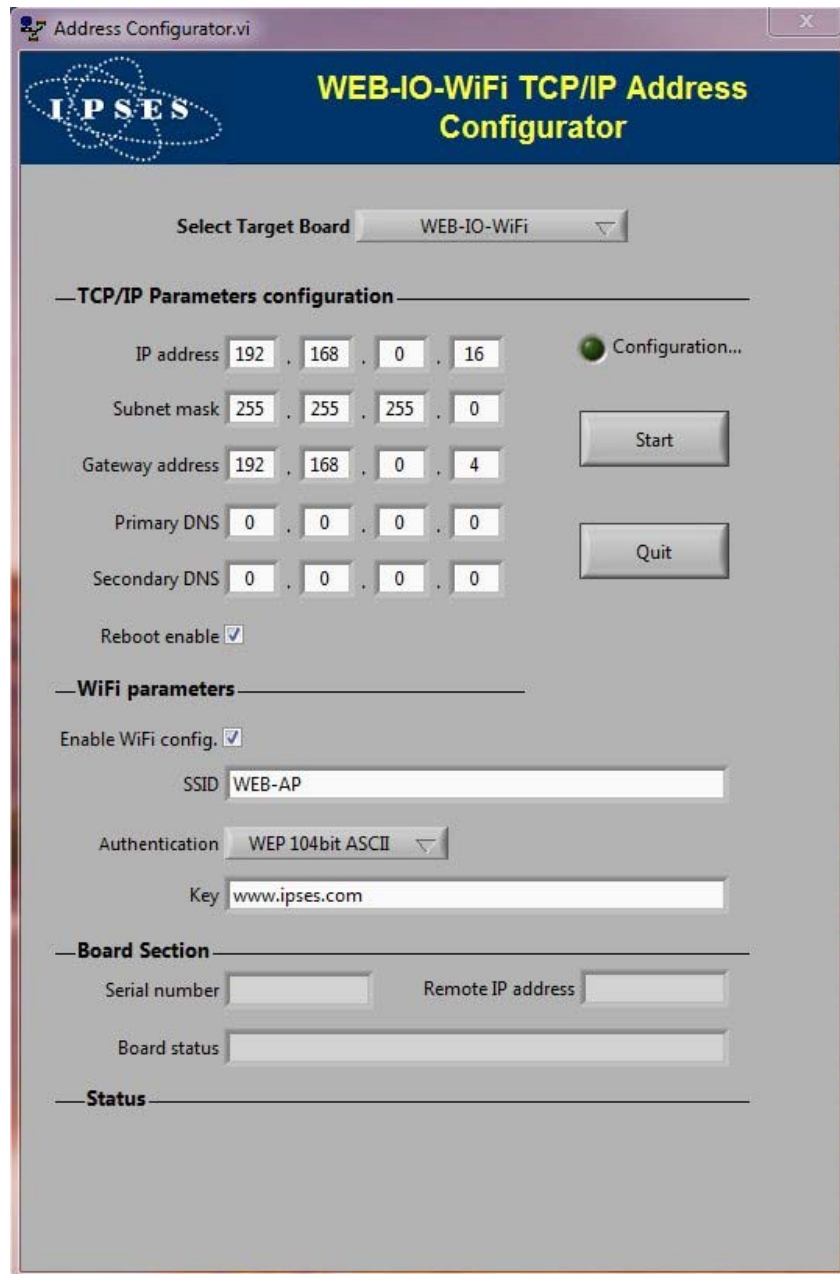
The *WEB-IO Board Address Configurator* control panel, shown in Picture 31, allows to configure both TCP/IP parameters, like IP address, Subnet mask address, Gateway address and Primary and Secondary DNS server addresses, and wireless parameters to connect to the Access Point. The modification of these last ones can be enabled by the user, after a WiFi model card was previously selected.

Before to set the new parameters, the user should properly select the target card through the *Select Target Board* ring: the wireless parameters will be enabled or disabled, based on selected model.

Every field is saved on the board: it is important to compile each field with correct values.

The *Reboot enable* checkbox allows to perform a software rebooting of the card after the address configuration is successfully ended.

If the configuration process ends successfully, the status LEDs D2 and D3 on the board will flash for about one second.



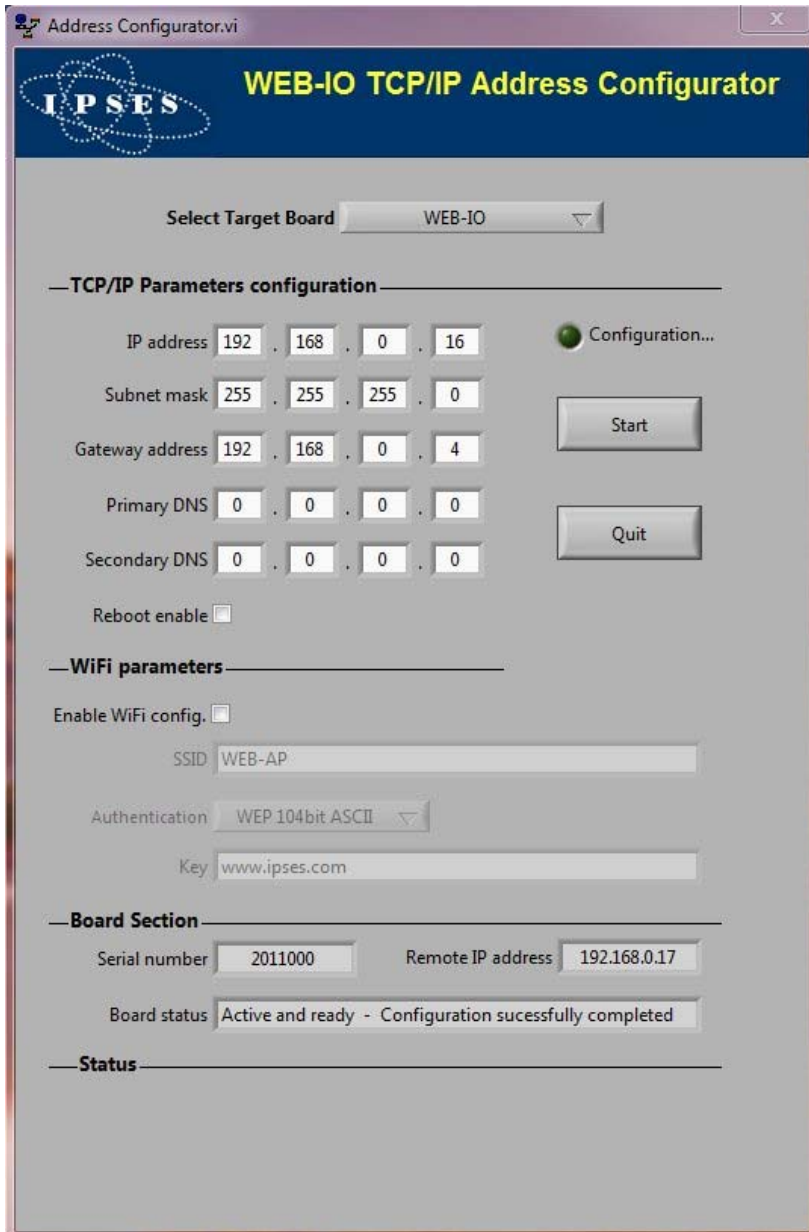
Picture 31: WEB-IO Address Configurator software control panel

To send the new TCP/IP address configuration, click the *Start* button; during the communication with the card the *Configuration* LED is on.

To exit the software, click on *Quit* button.

If the communication handshake to the card is successful, the *Serial number* and *Remote IP address* fields in the *Board Section* are filled respectively with the current S/N and IP address of the card, as shown in Picture 32.

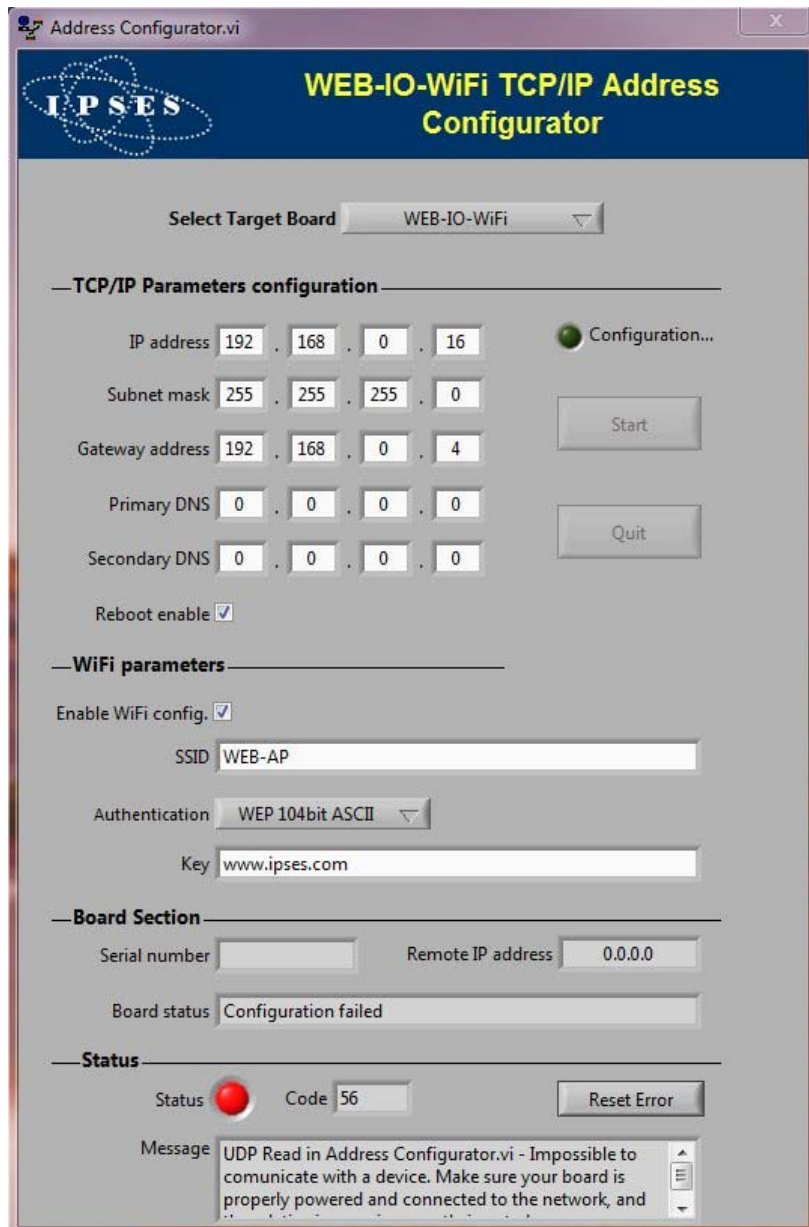
The Board status field shows a message about the progress of the configuration status.



The screenshot shows the 'Address Configurator.vi' window with the title 'WEB-IO TCP/IP Address Configurator'. The 'Select Target Board' dropdown is set to 'WEB-IO'. Under the 'TCP/IP Parameters configuration' section, the IP address is 192.168.0.16, Subnet mask is 255.255.255.0, Gateway address is 192.168.0.4, Primary DNS is 0.0.0.0, and Secondary DNS is 0.0.0.0. The 'Reboot enable' checkbox is unchecked. A green 'Configuration...' button is active. Under the 'WiFi parameters' section, 'Enable WiFi config.' is unchecked, SSID is 'WEB-AP', Authentication is 'WEP 104bit ASCII', and Key is 'www.ipses.com'. Under the 'Board Section', 'Serial number' is 2011000 and 'Remote IP address' is 192.168.0.17. The 'Board status' field displays 'Active and ready - Configuration successfully completed'. The 'Status' section is empty.

Picture 32: Configuration successfully completed.

If a communication error occurs, the *Serial number* field is empty and the *Remote IP address* field shows an invalid IP address (0.0.0.0), while an error message is shown in the *Status* section and the *Start* and *Quit* buttons are disabled until the error is reset, as shown in Picture 33.



Picture 33: Error during configuration.

To configure another card, perform the necessary hardware set on the board, then type new addresses and click on the *Start* button.

Note: if you are still using *Windows Vista* or *Windows 7* on your PC, your operative system could ask you to unlock a firewall restriction when you click on the *Start* button. Confirm the unlocking of the firewall restriction, otherwise the communication of the software via Ethernet will be interdicted from the operative system.

PRODUCT CODE

Code	Description
WEB-IO	WEB-IO control card with power supply from +5V to +9V
WEB-IO T	WEB-IO control card with temperature sensor and power supply from +5V to +9V.
WEB-IO -30	WEB-IO control card with power supply from +7V to +32V.
WEB-IO T -30	WEB-IO control card with temperature sensor and power supply from +7V to +32V.
WEB-IO (-30)-DIN	WEB-IO control card mounted on a universal support for DIN rail
WEB-IO T(-30)-DIN	WEB-IO control card with temperature sensor, mounted on a universal support for DIN rail
RTCLOG	External module with Real Time Clock and Log Memory
ETH-CABLE	Ethernet cable to connect the card

TECHNICAL FEATURES

Power supply: external, from 5V up to 9V (continuous current) for WEB-IO model and from 7V up to 32V (continuous current) for WEB-IO-30 model

Maximum current consumption: 240mA @5V, 250mA @12V

Working temperature: from 0°C up to +60°C

Storage temperature: from -40°C up to +85°C

Interface toward PC: RJ45 Ethernet connector

Card dimensions: 160 x 100 x 20 mm (6.30 x 3.94 x 0.79 inches)

Inputs: sixteen optocoupled inputs, reciprocally isolated in two groups of eight

Maximum applicable voltage:	36V
Input Impedance:	≈ 2.5Kohm
Logical LOW level:	< 1V
Logical HIGH level:	> 2.5V

Outputs: sixteen optocoupled outputs, reciprocally isolated in two groups of eight, in an open-collector configuration

Maximum output voltage:	36V
Maximum output current:	150mA

Protection: optocouplers with 2.500V_{RMS} maximum operative isolation voltage

Temperature sensor:

Resolution:	0.0625°C
Accuracy:	±1°C (max.) from +25°C to +65°C

$\pm 2^{\circ}\text{C}$ (max.) from -40°C to $+25^{\circ}\text{C}$ and from $+65^{\circ}\text{C}$ to $+85^{\circ}\text{C}$
 $\pm 3^{\circ}\text{C}$ (max.) from -55°C to -40°C and from $+85^{\circ}\text{C}$ to $+125^{\circ}\text{C}$

Supported protocols:

Telnet:	the card can work as a telnet server
HTTP:	the card can work as a web server
SNMP:	the card can work as an SNMP server
SMTP:	the card can work as an SMTP client
SNTP:	the card can work as an SNTP client able to request network date and time (with RTCLOG module)

IPSES I/O CARD AVAILABLE MODELS

IO-69: Input/output Card with 6 inputs and 9 relay outputs and USB interface



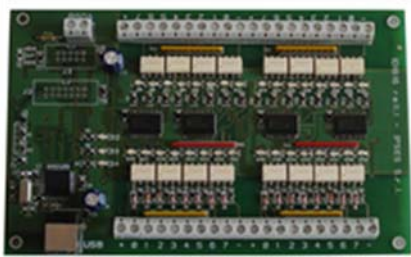
IO-69-USB is a self-powered card to manage six optocoupled inputs and nine relay outputs with USB interface.

A timeout control allows to protect the connecting devices, turning off all the outputs if it does not receive commands from the host within a time configurable through software.

Furthermore, there is the possibility to program all the outputs so that each one will activate only when inputs reach assigned conditions: in this case, IO-69 acts like a programmable logic controller (PLC).

The card is produced in two versions: with single pole double throw relay (SPDT) and with single pole single throw relay (SPST).

IO-1616: Input/output Card with 16 inputs and 16 outputs and USB or RS232 interface

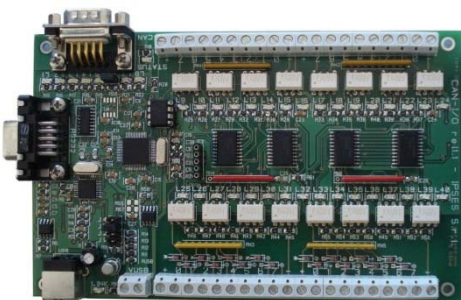


IO1616 is a self-powered card to manage sixteen optoisolated inputs and sixteen optoisolated outputs with USB interface. The model is available also with RS232 interface, in this case the card needs external power supply.

IO1616 can be directly connected to PLC, to input devices from operator and to other I/O systems. the status of each input

On request, an integrated temperature sensor allows to know in real time the temperature of the system IO1616 is placed in.

CAN-I/O: Input/output Card with 16 inputs and 16 outputs with CAN, USB and RS232 interface



CAN-I/O is a control unit equipped with CAN, USB and RS232 interfaces to manage sixteen optocoupled inputs and outputs. The card can work as standalone device on CAN BUS. Its configuration is achieved either through USB (in this case the board is self-powered) or through RS232 interface. Easy to use and to configure, thanks to the provided software, CAN-I/O is the right answer to the need to acquire and to drive digital signals through already existing CAN bus.

CAN-I/O can be directly connected to PLC, to input devices by operator and to other I/O systems.

Each input and output status can be read by a field bus at any moment. Besides, thanks to LEDs fixed on, the status is shown directly on the board. An integrated temperature sensor allows to know in real time the temperature of the system CAN-I/O is placed in.

WEB-IO: Input/output Card with 16 inputs and 16 outputs, Ethernet interface, integrated web, telnet and SNMP servers and SMTP client.



WEB-IO is a card to manage sixteen optocoupled inputs and sixteen optocoupled outputs with Ethernet interface, equipped with a web, a telnet and an SNMP servers, and an SMTP client. The web server allows to connect and to manage the card using any web browser (i. e. Internet Explorer or Firefox), with no needs to install a software on your PC. Besides, the card can be connected directly to a switch or to a router with no need to use a PC. It is also possible to develop a customized software managed by telnet service or SNMP client. The SMTP client allows to send alert email based on inputs status change events.

WEB-IO can be directly connected to PLC, to input devices from operator and to other I/O systems. Each input and output status can be read by a web browser or a telnet client at any moment, besides it is shown directly on the board thanks to LEDs fixed on. On request, the card can be equipped with an integrated temperature sensor which allows to monitor in real time the temperature around the regulator voltage module. Through expansion connectors the card can be interfaced to a RTCLOG (Real Time Clock and Logger) optional module: by this way, it can perform a log of the I/O states on a dedicated memory.

WEB-IO is available also in box version, it is provided with a demo software for Windows environment, based on telnet service.

WEB-IO-WiFi: Input/output Card with 16 inputs and 16 outputs, Ethernet and WiFi interfaces, integrated web, telnet and SNMP servers



WEB-IO-WiFi is a card to manage sixteen optocoupled inputs and sixteen optocoupled outputs with Ethernet and WiFi interfaces, equipped with a web, a telnet and an SNMP servers. The web server allows to connect and to manage the card using any web browser (i. e. Internet Explorer or Firefox), with no needs to install a software on your PC. Besides, the card can be connected directly to a switch or to a router, by this way it can be accessed by any PC connected to Internet. It is also possible to develop a customized software managed by telnet service or SNMP protocol. The board is available with built-in antenna or with ultra-miniature coaxial (U.FL) connector for external antenna connection.

WEB-IO-WiFi can be directly connected to PLC, to input devices from operator and to other I/O systems. Each input and output status can be read by a web browser or a telnet client at any moment, besides it is shown directly on the board thanks to LEDs fixed on. On request, the card can be equipped with an integrated temperature sensor which allows to monitor in real time the temperature around the regulator voltage module.

WEB-ADIO: Input/output Card with 8 analogical inputs, 8 digital inputs, 8 analogical outputs and 8 digital outputs, Ethernet interface, integrated web, telnet and SNMP servers

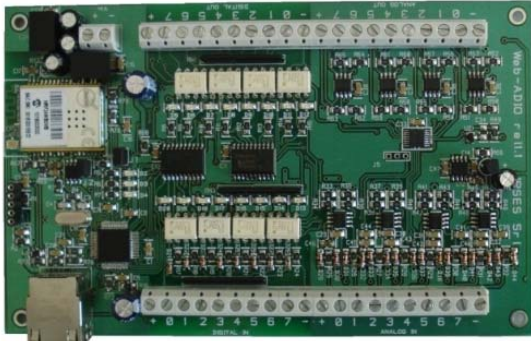


WEB-ADIO is a card to manage 8 optocoupled digital inputs, 8 analogical inputs, 8 optocoupled digital outputs and 8 analogical outputs with Ethernet interface, equipped with a web, a telnet and an SNMP servers. The WEB server allows to connect and to manage the card using any web browser (i. e. Internet Explorer and Firefox), with no needs to install a software on your PC. Beside, the card can be connected directly to a switch or to a router with no need to use a PC.

It is also possible to develop a customized software managed by telnet service.

WEB-ADIO can be directly connected to PLC or to analogical transducer, to input devices from operator and to other I/O systems. The analogical inputs and outputs have an operative voltage from 0V to 10V, with a resolution of 10mV and are calibrated one by one. Each input and output status can be read by a web browser or a telnet client at any moment, besides, the status of digital inputs and outputs it is shown directly on the board thanks to LEDs fixed on.

WEB-ADIO-WiFi: Input/output Card with 8 analogical inputs, 8 digital inputs, 8 analogical outputs and 8 digital outputs, Ethernet and WiFi interfaces, integrated web, telnet and SNMP servers



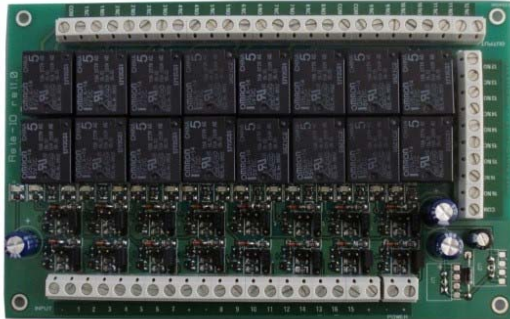
WEB-ADIO-WiFi is a card to manage 8 optocoupled digital inputs, 8 analogical inputs, 8 optocoupled digital outputs and 8 analogical outputs with Ethernet and WiFi interfaces, equipped with a web, a telnet and an SNMP servers. The web server allows to connect and to manage the card using any web browser (i. e. Internet Explorer and Firefox), with no needs to install a software on your PC. Beside, the card can be connected directly to a switch or to a router with no need to use a PC. The board is available with built-in antenna or with ultra-miniature coaxial (U.FL) connector for external antenna connection.

It is also possible to develop a customized software managed by telnet service.

The analogical inputs and outputs have an operative voltage from 0V to 10V, with a resolution of 10mV and are calibrated one by one.

WEB-ADIO-WiFi can be directly connected to PLC or to analogical transducer, to input devices from operator and to other I/O systems. Each input and output status can be read by a WEB browser or a telnet client at any moment, besides, the status of digital inputs and outputs it is shown directly on the board thanks to LEDs fixed on.

RELE' I/O: Interface module with 16 digital inputs that can control 16 SPDT relay outputs 5A



RELAY I/O(-SEL) is an expansion module with 16 digital inputs that can control 16 SPDT relay outputs 5A @ 250VAC or 5A @ 24VDC each

These modules can be used as an expansion for any I/O card, transforming the TTL or contact freedmen open-collector type outputs (up to a maximum of 16 ones) in 16 relay outputs with NO and/or NC contact.

IPSES provides two board models, based on different relay output tipology:

- RELÈ-IO board: the sixteen outputs are divided in two groups of eight with common COM contact and both NC and NO contacts available on output connectors.
- RELÈ-IO-SEL board: each output is independent and each relay provides COM contact and one contact selectable between NC and NO according dedicated selector configuration.

To operate the cards require an external power supply. Two version are available: RELÈ-IO(-SEL)-5 which requires an external power supply of 5V_{dc} or RELÈ-IO(-SEL)-24 which requires an external power supply from 7V_{dc} up to 24V_{dc}.

The card is in standard Eurocad format (100 x 160 mm - 3,94 x 6,30 inches) and can be supplied mounted on opened DIN rail.

N8-USB: Input Card with 8 inputs and USB interface



IN8 is a low size auto powered control unit equipped with USB interface. IN8 can check eight galvanic isolated inputs: on each input it is possible to apply voltages regardless from the USB ground, with a maximum voltage of 30V.

Easy to use, thanks to the driver provided with and to the LabVIEW library available on demand, IN8 also reduce installation costs.

The board low size to be easily integrated in several systems. Besides, IN8 has its inputs galvanically isolated to protect from electromagnetic disturbances and ground loops, improving its reliability and quality.

IN8 is the right answer to the need to acquire digital signals from a PC in an industrial environment.

LabVIEW Library for I/O cards:



A complete library for LabVIEW, giving the feasibility of I/O devices remote control, is available on request. The Library allows to implement a LabVIEW application without knowing the details of the communication protocol, making the development quick and easy. Each library is provided with a help file which explains deeper each function included with.

CONTACTS

IPSES S.r.l. conceives, projects and markets electronic and scientific instruments. The customized planning of our devices allows us to answer specific necessities for customers asking for embedded systems. IPSES clients enjoy access to a dedicated project engineering team, available as needed.

Our pool consists of highly competent professionals whose experience in this field is extremely strong. Thanks to constant updating and technical development, IPSES is a leading company, combining the dynamism of a young group into the competence and reliability of a qualified staff.

IPSES S.r.l.

Research and development office:

Via Suor Lazzarotto, 10
20020 Cesate (MI)
Italy

tel. (+39) 02 39449519 - (+39) 02 320629547

fax (+39) 02 700403170

e-mail: info@ipses.com

<http://www.ipses.com>



SUPPORT INFORMATION

The customer is at liberty to contact the relevant engineer at IPSES S.r.l. directly.

Telephone	:	(+39) 02 39449519 (+39) 02 320629547
Fax	:	(+39) 02 700403170
Email	:	support@ipses.com

PROBLEM REPORT

The next page is a standard template used for reporting system problems. It can be copied and send as a fax. Alternative bugs may be reported by emails, in this case please insure that the mail contains similar information listed in the *Engineering Problem Report* form.

ENGINEERING PROBLEM REPORT

Problem describer

Name		IPSES s.r.l. Via Suor Lazzarotto, 10 Cesate (MI) Italy Fax (+39) 02 700403170 e-mail support@ipses.com
Company		
Date	Tel.	

Product

Name	Version	Serial No.
------	---------	------------

Report Type (bug, change request or technical problem)

Major bug	<input type="checkbox"/>	Urgency:	
Minor bug	<input type="checkbox"/>	High	<input type="checkbox"/>
Change request	<input type="checkbox"/>	Medium	<input type="checkbox"/>
Technical problem	<input type="checkbox"/>	Low	<input type="checkbox"/>

Problem Description

--

Reproduction of Problem

--

IPSES s.r.l. Action notes

Received by	Date	Report No.	Action
-------------	------	------------	--------

(Product code WEB-IO Rel. 01.06.0001)

IPSES S.r.l.

Via Suor Lazzarotto, 10

20020 Cesate (MI) - ITALY

Tel. (+39) 02 39449519 – (+39) 02 320629547

Fax (+39) 02 700403170

e-mail: info@ipses.com

support@ipses.com