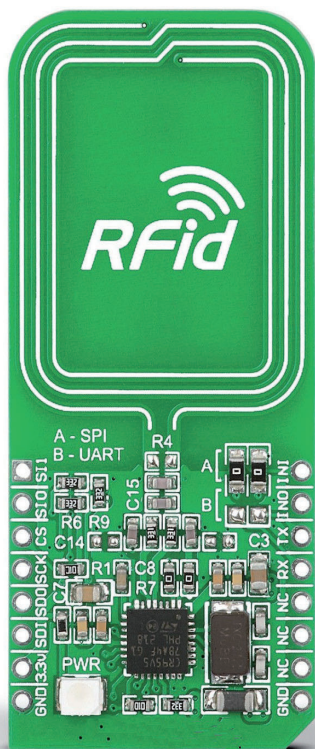


# NFC CREW

## NFC Configurator, REader and Writer



The NFC reading and writing system for functional testing is a hardware/software package that allows interfacing an RFID module and to manage it in a simple and effective way either through NI TestStand or NI LabVIEW, during the validation or test sequence.

The system consists of an RFIDClick module that integrates a ST CR95HF transceiver for near field communication (NFC) at 13.56MHz.

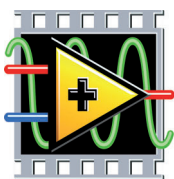
The supported communication protocols are as follows:

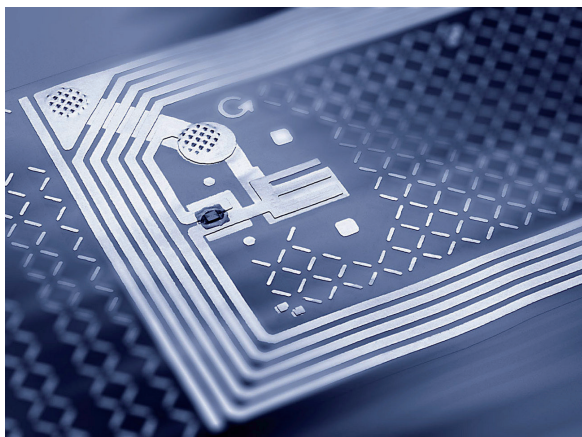
- ISO / IEC 15693
- ISO / IEC 14443-A
- ISO / IEC 14443-B
- ISO / IEC 18092

The user communication interface can be serial RS232 or USB.

The communication library, developed in LabVIEW, allows the RS232 serial control of the RFID module based on ISO/IEC 15693 protocol, allowing to send the following commands:

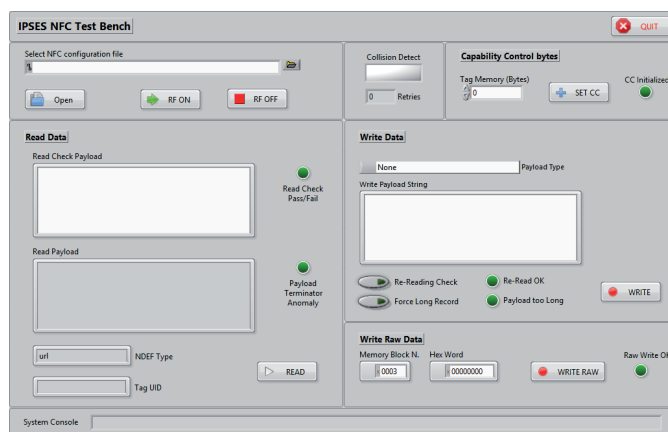
- Inventory
- Set Password
- Read EEPROM tag
- Write EEPROM tag





Writing takes place using NDEF tags with any payload (type and length, according to the standard). If necessary, it is also possible to write in raw format specific bytes with the RAW Data interface. It is possible to programmatically check the switch-on status of the RF carrier, switching to ON / OFF as required. Finally, the CC bits can be programmed, allowing a new tag to be prepared for use. The library can be fully integrated into NI TestStand, making its use for functional testing faster

IPSES NFC CREW control panel implements all the functions of the NFC library. If necessary, the panel allows tags to be operated directly and in a very short time, or it can be customized. Alternatively the library can be incorporated in other systems (LabVIEW, testStand, etc.) ensuring maximum flexibility of use in any test situation.



## PRODUCT CODE

- |                     |  |
|---------------------|--|
| <b>NFC-RW-RS232</b> | NFC reading/writing hardware/software system for functional test, with RS232 interface |
| <b>NFC-RW-USB</b>   | NFC reading/writing hardware/software system for functional test, with USB interface   |

## CONTACTS

Via Suor Lazzarotto, 10  
20020 Cesate (MI) ITALY  
tel. +39 02 39449519 - +39 02 99068453  
fax +39 02 700403170  
e-mail: [info@ipses.com](mailto:info@ipses.com)  
<http://www.ipses.com>

