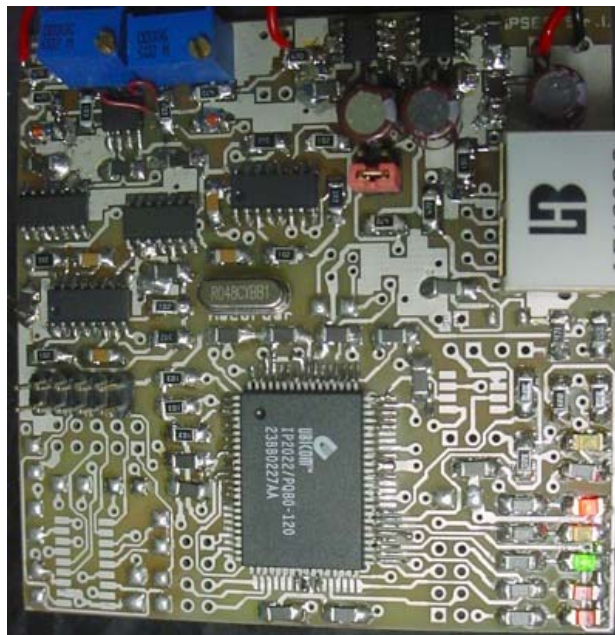


Pulse Recorder
USER MANUAL

Rel. 01.00.0003
(Hardware code: PulseRecorder)





Information provided in this manual is property of IPSES S.r.l. and must be considered and treated as confidential. This publication can only be reproduced, transmitted, transcribed or translated into any human or computer language with the written consent of IPSES S.r.l.

Information in this documentation has been carefully checked and is believed to be accurate as of the date of publication; however, no responsibility is assumed of inaccuracies. IPSES will not be liable for any consequential or incidental damages arising from reliance on the accuracy of this documentation.

Information contained in this manual is subject to change without notice and does not represent a commitment on the part of IPSES. The design of this instrument is subject to continue development and improvement. Consequently, the equipment associated to this document may incorporate minor changes in detail from the information hereafter provided.

All brand or product names are trademarks or registered trademarks of their respective holders.

This manual in English is the original version.

Printed in Italy

Copyright © 2009-2016 IPSES S.r.l.

All rights reserved.



GUARANTEE

IPSES warrants to the end-user in accordance with the following provisions that its branded hardware products, purchased by the end-user from IPSES company or an authorized IPSES distributor will be free from defects in materials, workmanship and design affecting normal use, for a period of one year as of the original purchase date. Products for which proper claims are made will, at IPSES's option, be repaired or replaced at IPSES's expense¹.

Exclusions

This Guarantee does not apply to defects resulting from: improper or inadequate installation, use or maintenance; actions or modifications by unauthorized third parties or the end-user; accidental or wilful damage or normal wear and tear.

Making a claim

Claims must be made by contacting IPSES office within the guarantee period.

Please, contact:

IPSES S.r.l. - Via Suor Lazzarotto, 10 - 20020 Cesate (MI) Italy

Tel. (+39) 02 39449519 – (+39) 02 320629547

Fax (+39) 02 700403170

<http://www.ipses.com> - e-mail: support@ipses.com

Limitation and Statutory Rights

IPSES makes no other warranty, guarantee or like statement other than as explicitly stated above and this Guarantee is given in place of all other guarantees whatsoever, to the fullest extent permitted by law. In the absence of applicable legislation, this Guarantee will be the end-user's sole and exclusive remedy against IPSES.

General Provisions

IPSES makes no express warranties or conditions beyond those stated in this warranty statement. IPSES disclaims all other warranties and conditions, express or implied, including without limitation implied warranties and conditions of merchantability and fitness for a particular purpose.

IPSES's responsibility for malfunctions and defects in hardware is limited to repair and replacement as set forth in this warranty statement.

IPSES does not accept liability beyond the remedies set forth in this warranty statement or liability for incidental or consequential damages, including without limitation any liability for products not being available for use or for lost data or software.

¹ With the exclusion of shipping costs for and from IPSES's development office.



WARNING!
ELECTRICAL DEVICES COULD DAMAGE EQUIPMENT OR PROPERTY OR CAUSE PERSONAL INJURY

This guide contains instructions and technical features of the Pulse Recorder.

Read with attention before attempting to install.

It is the responsibility of the technician to undertake all the safety rules provided by the law during the installation and the use of this device.

For any information which is not contained in this guide, please contact:

IPSES S.r.l. - Via Suor Lazzarotto, 10 - 20020 Cesate (MI) Italy

Tel. (+39) 02 39449519 – (+39) 02 320629547

Fax (+39) 02 700403170

<http://www.ipses.com> - e-mail: support@ipses.com





TABLE OF CONTENTS

REVISION HISTORY	6
GENERAL FEATURES	7
CONNECTION AND LOGIN	7
REMOTE CONTROL COMMUNICATION PROTOCOL	7
LAYOUT AND CONNECTIONS	9
TECHNICAL FEATURES	10
OTHER VERSIONS	10
CONTACTS	11
SUPPORT INFORMATION	12
PROBLEM REPORT	12
ENGINEERING PROBLEM REPORT	13





REVISION HISTORY

Manual revision history

Revision/ Date	Change description	Author
01.00.0000 December 2003	First version Released	Pizzocolo G.
01.00.0001 March 2008	Update template engagement	Barbera D.
01.00.0002 June, 2015	Update document template	Bottaccioli M.
01.00.0003 August, 2016	Added ISO 9001:20015 logo	Bottaccioli M.



GENERAL FEATURES

Pulse Recorder is a miniature, low-consumption, *stand-alone data logger* which can count and memorize pulse inputs from two channels.

The **reading and configuration** of the device is achieved through an *ethernet* interface, using a normal *TCP/IP telnet* connection. A customizable *password* protects the access from not allowed connections.

The **counting** takes place during a "*gate time*", programmable as needed: it is possible to select a *gate time* from 1 ms up to 14 hours, with a setting precision of 1 ms. A **LED** will light when the pulse counting is activated.

Pulse counting is recorded in a 64 bit integer variable which maintains a precision of one unit, even in case of very high values. The vector containing the previous counting is memorized using an exponential notation.

Beside, the device can calculate the input signal average frequency present in its first channel.

It is possible to set an alarm counting threshold for the first channel too: a LED will light when value is reached, then an appropriate system state bit will be set to 1.

CONNECTION AND LOGIN

The default *TCP/IP address* is 192.168.0.15, the *telnet port* used is number 23 (employed by most servers for telnet connection). These values can be changed through a specific command.

When a connection is established, system asks for a *login password*: the default password is "**ipses**", but it can be set by the user.

Using the correct *jumper* it is possible to restore all default values (*TCP/IP address*, *telnet port* and login password), until it will be removed (afterwards the stored values will be effective).

The communication with *Pulse Recorder* system takes place through an **Ethernet interface**, using a *TCP/IP telnet* connection. It is not necessary to connect the device directly to an acquisition server: any personal computer capable of connection to an *Ethernet-based network* will suffice. It is also possible to connect the system directly to internet through a *router*.

REMOTE CONTROL COMMUNICATION PROTOCOL

The exchanged strings are in **ASCII code** ended with <CR> character; other control characters (<LF>, <VT>, etc) are ignored. To make the commands effective, use lower-case letters (the command interpreter is *case-sensitive*).

The following commands are implemented:

<i>?</i>	Shows the available commands
<i>ax.x.x.x</i>	Changes the device TCP/IP address [0<x<255]. To make the change effective, the configuration parameters must be memorized (" <i>m</i> " command), then the system has to be switched off and back on.
<i>bx</i>	Changes the device telnet port . To make the change effective, the configuration parameters must be memorized (" <i>m</i> " command), then the system has to be switched off and back on.
<i>cxxxxxxx</i>	Sets a new password . The password can be any combination of alphanumeric characters, with a maximum of nineteen characters. This command will be immediately effective (the new password will be requested at the next connection), but it will be no kept if the system is power down without saving the configuration parameters using the " <i>m</i> " command.
<i>dx</i>	Sets the alarm threshold . ' <i>x</i> ' is the critical counting value: when the reached value is higher, the alarm is activated (this value can be from 1 up to 18.446.744.073.709.551.615). The default is 10.000.

<i>d?</i>	Shows the value, in hexadecimal form, of the alarm threshold.
<i>fs</i>	Enables the input signal frequency counting on the first channel (it works only when the counting is activated).
<i>fk</i>	Interrupts the input signal frequency counting on the first channel.
<i>fp</i>	Shows the computed frequency.
<i>ir</i>	Resets input interrupt counting.
<i>i?</i>	Shows input interrupt counting.
<i>k</i>	Stops immediately the counting started with "s" or "f" commands.
<i>m</i>	Saves configuration parameters in the internal non volatile memory (saved data are: TCP/IP address, telnet port, password and checksum).
<i>p</i>	Shows memorized counting, in hexadecimal form, on both channels.
<i>q</i>	Disconnects the device.
<i>r</i>	Shows the last 100 countings memorized on both channels in exponential notation. The execution of this command requests the use of many system resources: for this, during its execution, the pulses eventually present at the inputs could be no counted.
<i>sx</i>	Starts the counting. 'x' is the time in ms (it can be set out from 0 up to 51.200.000, that is from 0 and up to more than 14 hours).
<i>tx</i>	Starts the repetitive counting. 'x' is the time in ms (it can be set from 0 up to 51.200.000, that is from 0 and up to more than 14 hours).
<i>u</i>	State request (this command resets also any memorized error state)
<i>v</i>	Shows the firmware version and the configuration parameters (TCP/IP address, telnet port, password and checksum)

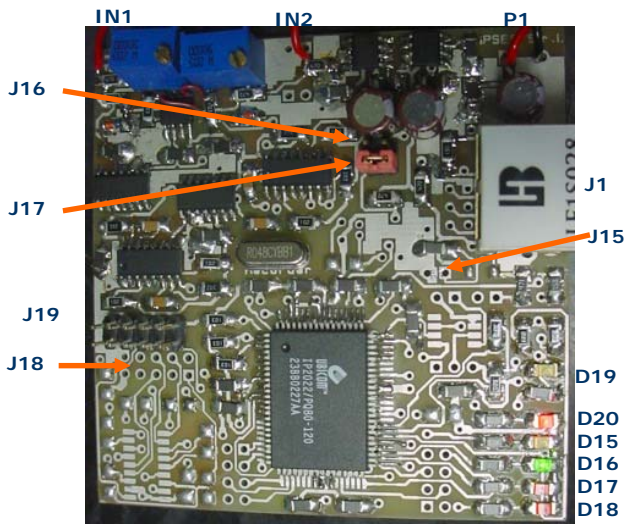
The status request message ("*u<CR>*") gets by the device a byte (2 hex characters) representing the actual status of the unit. Status code is reported here below:

bit 7: error;
bit 6: not used (always 0);
bit 5: repetitive counting state (1 = enabled);
bit 4: auxiliary output (1 = enabled);
bit 3: alarm activated (the counting has reached the set out alarm threshold value);
bit 2: alarm switched on;
bit 1: counting state (1 = enabled);
bit 0: frequency counting algorithm activated.

If the error *bit* is high (i. e. if device answers with a code as 81), then another code is added after a comma (more than one error code can be active). Possible codes are:

01 Syntax error
02 Illegal command (i.e. an "s" command when another counting is already active, or an "k" command during no counting)
04 Out of range parameter
08 Attempted connection when the device is already connected.
10 Invalid data on the flash
20 Invalid data checksum on the flash
40 Buffer overflow
80 Internal error

LAYOUT AND CONNECTIONS



- LEDs:
- D15 (green): Activity on the ethernet port.
 - D16 (yellow): established link on the ethernet port.
 - D17 (red): Collision on the ethernet port.
 - D18 (red): Error
 - D19 (yellow): Counting activated
 - D20 (red): Alarm threshold reached

- Connectors:
- IN1: first channel input
 - IN2: second channel input
 - P1: power supply
 - J1: RJ45 ethernet connector
 - J18: RS232 serial connector (optional)
 - J19: reserved

- Jumper:
- J15: reset
 - J16: use the default configuration
 - J17: reserved



TECHNICAL FEATURES

Power supply: 5Vdc stabilized.

Maximum Consumption: 150mA

Inputs: two. They accept signals from 0 up to 5V. Programmable threshold.

Max Rate: 1,6 MHz

Maximum counting: 18.446.744.073.709.551.615 (about 18 billions of billions)

Gate timer: variable continuatively from 1ms up to 51.200s (more than 14 hours).

Memory: the device can store the last 100 counting for each channel.

Alarm threshold: continuatively settable from 0 up to 18.446.744.073.709.551.615 (about 18 billions of billions)

Interface: 10base-T ethernet (RJ45 connector).

Dimension: about 70 x 70 mm (2.76 x 2.76 inches).

OTHER VERSIONS

IPSES can realize **customized versions** of this device, in order to match any customer need.

For example, is possible to ask for versions with a bigger memory or working with any **other Power Supply** value or with any kind of input signals.

Thanks to customized design, **Pulse Recorder** is a cheap device which perfectly gets all your requests.





CONTACTS

IPSES S.r.l. conceives, projects and markets electronic and scientific instruments. The customized planning of our devices allows us to answer specific necessities for customers asking for embedded systems. **IPSES** clients enjoy access to a dedicated project engineering team, available as needed.

Our pool consists of highly competent professionals whose experience in this field is extremely strong. Thanks to constant updating and technical development, **IPSES** is a leading company, combining the dynamism of a young group into the competence and reliability of a qualified staff.

IPSES S.r.l.

Research and development office:

Via Suor Lazzarotto, 10
20020 Cesate (MI)
Italy

tel. (+39) 02 39449519 - (+39) 02 320629547

fax (+39) 02 700403170

e-mail: info@ipses.com

<http://www.ipses.com>





SUPPORT INFORMATION

The customer is at liberty to contact the relevant engineer at IPSES S.r.l. directly.

Telephone	:	(+39) 02 39449519 (+39) 02 320629547
Fax	:	(+39) 02 700403170
Email	:	support@ipses.com

PROBLEM REPORT

The next page is a standard template used for reporting system problems. It can be copied and send as a fax. Alternative bugs may be reported by emails, in this case please insure that the mail contains similar information listed in the *Engineering Problem Report* form.





ENGINEERING PROBLEM REPORT

Problem describer

Name		IPSES s.r.l. Via Suor Lazzarotto, 10 Cesate (MI) Italy Fax (+39) 02 700403170 e-mail <i>support@ipses.com</i>
Company		
Date	Tel.	

Product

Name	Version	Serial No.
------	---------	------------

Report Type (bug, change request or technical problem)

Major bug	<input type="checkbox"/>	Urgency:	
Minor bug	<input type="checkbox"/>	High	<input type="checkbox"/>
Change request	<input type="checkbox"/>	Medium	<input type="checkbox"/>
Technical problem	<input type="checkbox"/>	Low	<input type="checkbox"/>

Problem Description

Reproduction of Problem

IPSES s.r.l. Action notes

Received by	Date	Report No.	Action
-------------	------	------------	--------





(Product code PulseRecorder Rel. 01.00.0003)

IPSES S.r.l.

Via Suor Lazzarotto, 10

20020 Cesate (MI) - ITALY

Tel. (+39) 02 39449519 – (+39) 02 320629547

Fax (+39) 02 700403170

e-mail: info@ipses.com

support@ipses.com

